



CITY OF
FAYETTEVILLE
ARKANSAS

*113 W Mountain Street
Fayetteville, AR 72701*

Transportation Committee Agenda

**(Immediately Following City Council Agenda Session)
City Hall Room 101 / Virtual Meeting Via Zoom
Tuesday, March 31, 2026
5:30 PM**

Members

***Council Member Sarah Moore, Chair
Council Member Robert "Bob" Stafford
Council Member Sarah Bunch
Council Member Min. Monique Jones***

City Staff

***Public Works Director Chris Brown
Assistant Public Works / Transportation Services Director Terry Gulley
City Engineer Justin Bland***

Zoom Information

Webinar ID: 867 2629 4072

Registration Link: [Zoom Link](#)

A. Call to Order

B. Roll Call

C. New Business

C.1. Plainview Avenue/Rolling Hills Connection-Contract Amendment with Garver

Review of a Contract Amendment with Garver for Additional Design Services for design modifications on the Plainview and Rolling Hills Drive Connection. A recommendation from the Committee to the City Council is requested.

C.2. S. School Ave. Improvement - Contract Amendment with ISG

Review of a Contract Amendment with ISG for additional design services on the S. School Ave. Project

D. Reports and Presentations

D.1. Transportation Work Plan Update

Review of the quarterly progress report for sidewalks, trails, paving and miscellaneous Transportation Division Projects

E. Informational Items

E.1. Amendment to Resolution 219-25 to Include Additional Benches for Bus Stops:

A resolution to waive competitive bidding and authorize the purchase of 10 additional bus stop benches in the amount of \$9,025.00, plus any applicable sales taxes and shipping charges, from Brasco International. (2026-807)

E.2. Crafton Tull & ARDOT Agreement - MLK Pedestrian Improvements:

A resolution to award RFQ #26-01 and authorize a professional engineering services contract with Crafton, Tull & Associates, Inc. in the amount of \$114,376.00 for the design of the Martin Luther King, Jr Boulevard Pedestrian Improvements Project, and to approve a master agreement addendum with the Arkansas Department of Transportation. (2026-1130)

E.3. Traffic Calming Policy Update:

A resolution to approve a new Traffic Calming Policy. (2026-1131)

F. Adjournment



Meeting of March 31, 2026

To: Transportation Committee
Thru: Chris Brown, Public Works Director
From: Justin Bland, City Engineer
Subject: **Review of a Contract Amendment with Garver for additional design services on the Plainview and Rolling Hills Extension Project**

Recommendation:

Staff recommends approval of a design contract Amendment with Garver in the amount of \$88,050 for additional design services on the Plainview and Rolling Hills Extension Project

Background:

This is a 2019 bond program project that was originally intended to connect Appleby Drive, Rolling Hills Drive, and Plainview Avenue through the Fiesta Square Shopping Center. The project was stalled due to property acquisition issues, and was modified to remove the southern portion of the project. Design of the project has begun moving forward, and construction is planned for later this year.

Discussion:

The project revisions have resulted in additional design effort by Garver. They have provided a proposed contract amendment in the amount of \$88,050 for these additional design services. Detail of this amendment is attached.

Budget/Staff Impact:

These fees will be paid from the 2019 bond program funds.

Attachments: APPENDIX A - Garver Scope of Services- Amend #1

APPENDIX A – SCOPE OF SERVICES

AMENDMENT NO. 1

1. General

Generally, the scope of services includes revising final plans and property acquisition documents as required to redesign the roundabout as a mini-roundabout at the intersection of the existing Fiesta Square entrance with the new roadway. The revisions also include changing the alignment of the proposed Plainview Avenue and adding a right turn lane between the proposed mini-roundabout and the College Avenue intersection. These changes will result in updated designs for roadway, landscaping, electrical, traffic signal, water and sewer relocations, and preparation of revised property acquisition documents

The following Section 11 – Final Design for Amendment No. 1 shall be added to the previously approved Section 11 – Final Design.

11. Final Design

11.1. Signalization Design

The revised signal design and plans will include the following:

- A dedicated right turn only lane to turn southbound onto College Ave. from new roadway to roundabout
- Signal pole layout revision for poles B & C (pedestrian pushbuttons) for ADA compliance
- Verify proper signal head alignment
- Updates to Detector Chart, Interval Chart, and Phasing
- Quantity Updates
- 90% plan submittal for client review and comment then Final Revised Plans

11.2. Mini-Roundabout Final Design (90% & 100%)

Garver will revise the Final Design plans to incorporate the changes to the alignment and roundabout. During the final design phase of the project, Garver will conduct final designs to prepare construction plans and specifications, for one construction contract, including final construction details and quantities, special provisions, and opinion of probable construction cost. Garver will also provide final coordination with Owner, make any needed plan changes as a result of the final review comments and/or special easement acquisition considerations, and prepare the construction documents as required to advertise for bids.

The following design items shall be revised:

- Horizontal and Vertical Alignments
- Roadway Model
- Drainage Design
- Lighting Layout

The following plan sheets shall be revised:

- Typical Sections
- Maintenance of Traffic Plans
- Pavement Marking and Striping Plans
- Demolition Plans

- Cross Sections
- Drainage Plans and Profiles
- Survey Control Plans
- Roundabout Layout Plans
- Roundabout Grading Plans
- Erosion Control Plans
- Landscaping Plans

11.3. Utility Potholing (Crossland)

Garver will subcontract with Crossland Heavy Construction to perform subsurface potholing for up to eight (8) locations to develop accurate locations and depth information for underground utilities and confirm conflicts and required utility relocations.

11.4. Water and Sewer Plans

Garver will revise water and sewer line design per previous City comments and from the findings of the utility potholing. Water/Sewer plan and profile sheets will be revised as required to accommodate changes to design.

The following Section 12 – Property Acquisition Documents for Amendment No. 1 shall be added to the previously approved Section 12 - Property Acquisition Documents.

12. Property Acquisition Documents

Revised Property Acquisition Documents

Garver will develop updated individual tract maps with description of temporary and permanent acquisition for each property affected by the changes to the roadway alignment and roundabout. The Owner will provide a standard easement acquisition document or “go-by” example for use by Garver. The fee for providing property acquisition documentation is based on permanent right of way and temporary construction easements for no more than 3 properties.

Garver will stake ROW/easements up to one (1) time as requested by the City.

Exhibit B - Amendment No. 1

City of Fayetteville Plainview Avenue Extension

FEE SUMMARY

Title I Service	Original Estimated Fees	Amendment No. 1 Estimated Fees	Total Estimated Fees
Geotechnical Services (Terracon)	\$ 5,400.00		\$ 5,400.00
Record Research	\$ 5,400.00		\$ 5,400.00
Utility Markings (ARKUPS)	\$ 400.00		\$ 400.00
Environmental Handling/Documentation	\$ 2,800.00		\$ 2,800.00
Traffic Studies	\$ 19,700.00		\$ 19,700.00
H&H Study	\$ 23,650.00		\$ 23,650.00
Signalization Design	\$ 28,260.00	\$ 9,100.00	\$ 37,360.00
Surveys	\$ 49,870.00		\$ 49,870.00
Conceptual Design	\$ 66,820.00		\$ 66,820.00
Preliminary Design	\$ 87,850.00		\$ 87,850.00
Preliminary Design - Electrical	\$ 9,000.00		\$ 9,000.00
Final Design	\$ 77,100.00		\$ 77,100.00
Final Design - Electrical	\$ 5,120.00		\$ 5,120.00
Property Acquisition Documents	\$ 16,450.00	\$ 9,000.00	\$ 25,450.00
Bidding Services	\$ 4,830.00		\$ 4,830.00
Mini- Roundabout Final Design (90%/100%)		\$ 35,200.00	\$ 35,200.00
Final Design - Water & Sewer Relocations		\$ 24,750.00	\$ 24,750.00
Utility Potholing (Subconsultant)		\$ 10,000.00	\$ 10,000.00
Subtotal for Title I Service	\$ 402,650.00	\$ 88,050.00	\$ 490,700.00
Title II Service	Original Estimated Fees	Amendment No. 1 Estimated Fees	Total Estimated Fees
Construction Phase Services	\$ -	\$ -	\$ -
Subtotal for Title II Service	\$ -	\$ -	\$ -
Total All Services	\$ 402,650.00	\$ 88,050.00	\$ 490,700.00

Exhibit B - Amendment No. 1

**City of Fayetteville
Plainview Avenue Extension**

REVISED SIGNALIZATION DESIGN

WORK TASK DESCRIPTION	E-6	E-5	E-3	E-1	T-1
	\$320.00	\$261.00	\$183.00	\$140.00	\$105.00
	hr	hr	hr	hr	hr
1. Phase					
Pedestrian Push Button Pole Layout Revision		2		4	
Verify signal head alignment		2		2	2
Detector Chart, Interval Chart, and Phasing Updates		2	8	4	
Quantity Revisions		1		2	2
90% Revised Plans Submittal Review Comments		2	2	4	
Final Revised Plans		2	2	4	2
QA/QC	1	1			
Subtotal - Phase	1	12	12	20	6

Hours	1	12	12	20	6
Salary Costs	\$320.00	\$3,132.00	\$2,196.00	\$2,800.00	\$630.00

SUBTOTAL - SALARIES: \$9,078.00

DIRECT NON-LABOR EXPENSES

Document Printing/Reproduction/Assembly \$22.00

SUBTOTAL - DIRECT NON-LABOR EXPENSES: \$22.00

SUBTOTAL: \$9,100.00

SUBCONSULTANTS FEE: \$0.00

TOTAL FEE: \$9,100.00

Exhibit B - Amendment No. 1

**City of Fayetteville
Plainview Avenue Extension**

PROPERTY ACQUISITION DOCUMENTS

WORK TASK DESCRIPTION	E-1	S-5	S-2	2-Man Crew (Survey)	2-Man Crew (GPS Survey)
	\$140.00	\$207.00	\$85.00	\$243.00	\$307.00
	hr	hr	hr	hr	hr
1. Acquisition Documents					
Coordination and Administration	1	1			
Permanent Right-of-Way Acquisition Documents		4	8		
Temporary Construction Easements		4	8		
Stake Proposed Easement (Maximum 6-Parcels)		8		6	8
Subtotal - Acquisition Documents	1	17	16	6	8
Hours	1	17	16	6	8
Salary Costs	\$140.00	\$3,519.00	\$1,360.00	\$1,458.00	\$2,456.00
SUBTOTAL - SALARIES:		\$8,933.00			
<u>DIRECT NON-LABOR EXPENSES</u>					
Travel Costs	\$67.00				
SUBTOTAL - DIRECT NON-LABOR EXPENSES:		\$67.00			
SUBTOTAL:		\$9,000.00			
SUBCONSULTANTS FEE:		\$0.00			
TOTAL FEE:		\$9,000.00			

Exhibit B - Amendment No. 1

**City of Fayetteville
Plainview Avenue Extension**

MINI- ROUNDABOUT FINAL DESIGN (90%/100%)

WORK TASK DESCRIPTION	E-5	E-2	E-1	T-2	E-4	E-1	P-2
	\$261.00	\$164.00	\$140.00	\$122.00	\$214.00	\$140.00	\$217.00
	hr	hr	hr	hr	hr	hr	hr
1. Project Management							
Administration and Coordination	4						
Subtotal - Project Management	4	0	0	0	0	0	0
2. Civil Engineering							
Revise Horizontal and Vertical Alignments		1	4				
Revise Roadway Model		1	4				
Revise Drainage Design		1	4				
Revise Typical Sections		1	4	4			
Revise Maintenance of Traffic Plans		2	4	4			
Revise Pavement Marking and Striping Plans		2	4	2			
Revise Demolition Plans		2	2	2			
Revise Cross Sections		1	4	4			
Revise Drainage Plan and Profiles		1	6	4			
Revise Survey Control Plans		1	2	2			
Revise Driveway Plans		1	2	2			
Revise Roundabout Layout Plans		4	4	4			
Revise Roundabout Grading Plans		4	6	4			
Revise Erosion Control Plans		2	4	4			
Revise Landscaping Plans					2	20	
Coordination with Utility Companies		2	4				
Coordination and Meetings with Owner	2	2					
Coordination with Property Owners	2	2					
SWPPP/Coordination with DEQ		1		6			6
Specifications/Contract Documents		6	4		1	1	
Quantities		4	8			1	
Opinion of Probable Construction Cost		4	4			1	
Quality Control Review	4				2		
Address City Comments on 90%		8	8	8			
Subtotal - Civil Engineering	8	53	82	50	5	23	6

Hours	12	53	82	50	5	23	6
Salary Costs	\$3,132.00	\$8,692.00	\$11,480.00	\$6,100.00	\$1,070.00	\$3,220.00	\$1,302.00

SUBTOTAL - SALARIES: \$34,996.00

DIRECT NON-LABOR EXPENSES

Document Printing/Reproduction/Assembly \$204.00

SUBTOTAL - DIRECT NON-LABOR EXPENSES: \$204.00

SUBTOTAL: \$35,200.00

SUBCONSULTANTS FEE: \$0.00

TOTAL FEE: \$35,200.00

Exhibit B - Amendment No. 1

City of Fayetteville

Plainview Avenue Extension

FINAL DESIGN - WATER & SEWER RELOCATIONS

WORK TASK DESCRIPTION	E-5	E-4	E-1	T-2
	\$261.00	\$214.00	\$140.00	\$122.00
	hr	hr	hr	hr
2. Civil Engineering				
Revise Water Line Horizontal Alignments		8	12	
Revise Sewer Line Horizontal Alignments		8	12	
Plan & Profile Sheets		8	30	16
Detail Sheets		1	2	
ADH Permitting		4	8	
Coordination with Utility Companies		2		
Coordination and Meetings with Owner		6		
Submittals to Owner		2	2	
Measurement and Payment Specs		8		
Quantities		1	6	
Opinion of Probable Construction Cost		4		
Quality Control Review	4			
Subtotal - Civil Engineering	4	52	72	16
Hours	4	52	72	16
Salary Costs	\$1,044.00	\$11,128.00	\$10,080.00	\$1,952.00

SUBTOTAL - SALARIES: \$24,204.00

DIRECT NON-LABOR EXPENSES

Document Printing/Reproduction/Assembly \$31.00
 ADH Permitting \$515.00

SUBTOTAL - DIRECT NON-LABOR EXPENSES: \$546.00

SUBTOTAL: \$24,750.00

SUBCONSULTANTS FEE: \$0.00

TOTAL FEE: \$24,750.00



**AMENDMENT TO AGREEMENT FOR
PROFESSIONAL ENGINEERING SERVICES
CITY OF FAYETTEVILLE, AR
ISG PROJECT #25-32858**

CONTRACT AMENDMENT NO. 1

This Contract Amendment No. 1, effective on the date last written below, shall amend the original contract between the **City of Fayetteville** (Owner) and **I & S Group, Inc. (ISG)**, dated August 5, 2025 referred to in the following paragraphs as the original contract.

This Contract Amendment No. 1 adds professional design services for the :

Improvements to South School Avenue from MLK Jr. Boulevard to 15th Street.

In general, Amendment No. 1 scope of services include survey, environmental review, street design, traffic signal design, water utility design, storm sewer culvert design, real estate acquisition documents, and bidding support.

APPENDIX A – SCOPE OF SERVICES

All items contained in the attached Amendment No. 1 Appendix A shall be added to the original project Scope of Services.

APPENDIX B – PROJECT FEE SPREADSHEETS

The attached hourly rates, summary sheet and fee spreadsheets shall be added to APPENDIX B as included in the original agreement. The Amendment No. 1 shall increase the agreement amount a sum of \$443,000.00 from \$287,000.00 to \$730,000.00.



This Agreement may be executed in two (2) or more counterparts each of which shall be deemed an original, but all of which together shall constitute one and the same instrument.

IN WITNESS WHEREOF, Owner and ISG have executed this Amendment effective as of the date last written below.

CITY OF FAYETTEVILLE

I & S Group, Inc.

By: _____

By: William A. Kratt

Name: _____

Name: William Kratt

Title: _____

Title: Business Unit Leader

Date: _____

Date: March 20, 2026

Attest: _____



APPENDIX A

SCOPE OF SERVICES

Project

The scope of services generally includes survey, environmental review, street design, traffic signal design, water utility design, storm sewer culvert design, real estate acquisition documents, and bidding support. The project limits are School Avenue from W 15th St to W Martin Luther King Jr Boulevard, including the functional areas of the intersections. The project is being funded through a Safe Streets and Roads for All (SS4A) grant from the United States Department of Transportation (USDOT) and local funding. The reconstruction will include enhancements to pedestrian infrastructure, landscaping, hardscaping, streets, intersections, drainage systems, water systems, sanitary sewer systems, and access control.

PRELIMINARY DESIGN PHASE

Once the City approves the conceptual plans, ISG will begin the preliminary design phase and incorporate remaining comments from the conceptual design phase. The preliminary design phase will document design decisions and will be used to complete the NEPA documentation, and continue coordinating with agencies, utilities, and other stakeholders. A preliminary scope of services is provided below that may be included in the Preliminary Design Phase, however, this is subject to modification and revisions based on the findings during the Conceptual Design Phase and the preferred selected alternative.

Surveys

Right-of-Way and Easement Exhibit Preparation

ISG will prepare the right-of-way and easement descriptions along with associated exhibits as necessary, to assist with any anticipated land acquisition adjacent to existing City of Fayetteville right-of-way or easements. These exhibits will be based upon the final negotiated property acquisition agreements between the landowners and the City of Fayetteville and will be utilized for recordation.

Utility Coordination

Once preliminary plans and right-of-way and easement documents are prepared, ISG will provide these documents to utilities in order for them to confirm any conflicts their facilities have with the reconstruction. Utilities will be asked to provide a work plan for any removals, relocations, or additions to their facilities. The work plan will include drawings and a proposed schedule for any work on their facilities. ISG will coordinate with utilities to encourage the relocation of any conflicts prior to the reconstruction of School Avenue. Any conflicts that must be resolved during reconstruction of School Avenue will be coordinated and information will be provided in the contract documents for the City's contractor to continue coordination through the reconstruction of School Avenue.

Environmental

Agency Coordination

ISG will provide preliminary and final plans to the following agencies for regulatory approvals, if required:

- Arkansas Division of Environmental Quality (ADEQ)
- Arkansas Department of Health



- Division of Arkansas Heritage
- United States Army Corp of Engineers (USACE)
- United States Fish and Wildlife Service (USFWS)

Environmental Document

ISG will finalize the environmental document, as required by the National Environmental Policy Act (NEPA), to Federal Highway Administration (FHWA) standards. The subject project is assumed to require a Tier 3 Categorical Exclusion (CE). Once complete, ISG will furnish the City and the FHWA original copies for review. ISG will incorporate comments into a revised document. ISG assumes up to two rounds of comments. ISG will submit the final document to FHWA for its approval.

Public Engagement

ISG will provide the City with written content, graphics, and project documentation for the City's use on the City's website, social media, and other communication methods. In addition, the following meetings are anticipated:

- Up to Two (2) public involvement meetings, one prior to preliminary design, and one during final design and prior to bidding
- Up to One (1) Transportation Committee meetings
- Up to One (1) Active Transportation Committee meetings
- Meetings with residents, businesses, property owners, and other stakeholders, as necessary

ISG will coordinate the public meetings, with assistance from the City. ISG will keep a public engagement log of comments and interactions with public stakeholders and will provide the log to the City.

Culvert Design

ISG will complete a comprehensive Hydrologic and Hydraulic (H&H) study to evaluate the existing culvert at the Tanglewood Branch crossing. This study will include an analysis of current conditions, modeling of proposed improvements, and recommendations for appropriate culvert replacement sizing. ISG will also document the anticipated upstream and downstream impacts associated with the proposed improvements.

Incorporating the culvert replacement into the project scope may necessitate additional environmental investigations, including but not limited to an endangered species bat assessment. Permitting through agencies such as the Arkansas Department of Environmental Quality (ADEQ) and the Federal Emergency Management Agency (FEMA) will also be required. ISG will coordinate directly with each permitting agency to obtain all necessary approvals for the project.

It is anticipated that the culvert will be a precast reinforced concrete box. Should the preferred alternative be of a different structure type requiring structural analysis and design, ISG can provide a subsequent proposal with those additional service.

Preliminary Plans

ISG will prepare a Preliminary Plan set that will take the preferred alternative to approximately 60% of completed construction documents. An updated opinion of probable cost will be provided. ISG will coordinate a preliminary plan review meeting with the City. The preliminary plan set will include:

- Title Sheet
- Typical Sections
- Construction Details

Contract Amendment No. 1

South School Ave. – MLK Jr. Blvd to 15th St.

I & S Group, Inc. | 3100 Market Street + Suite 106 + Rogers, AR 72758 + 479.974.1601



- Removal Plans
- Utility Plans and Profiles
- Intersection Details
- Street Plans and Profiles
- Pavement Marking and Signing Plans
- Maintenance of Traffic Conceptual Plans
- Cross Sections
- Box Culvert Plan and Profile

Landscape Architecture

ISG will design streetscape amenities. These amenities could include plantings, planters, benches, bus shelters, refuse receptacles, placemaking features, gateway features, and other amenities. Streetscape amenities will be coordinated with green infrastructure, lighting, and street reconstruction designs.

Electrical Design

ISG will design street lighting. Lighting spacing will be according to City standards. If none exist, spacing will match typical installations. A photometric analysis will be provided, if requested.

FINAL DESIGN

Once the City approves the preliminary plans, ISG will begin the final design phase and incorporate remaining comments from the preliminary design phase. The final design phase will provide construction plans, specifications, and estimates for the purpose of bidding and construction. Plans and specifications will be used to continue coordinating with agencies, utilities, and other stakeholders. ISG will coordinate a final plan review meeting with the City. After comments from the final plan review meeting are received and incorporated, a plan-in-hand walkthrough will be conducted with the City, and final changes will be incorporated into the final construction documents prior to bidding. An updated opinion of probable cost will be provided. The final plan set will include:

- Title Sheet
- Project notes
- Typical Sections
- Construction Details
- Removal Plans
- Erosion Control Plans
- Utility Plans and Profiles
- Intersection Details
- Street Plans and Profiles
- Pavement Marking and Signing Plans



- Maintenance of Traffic Plans
- Cross Sections
- Box Culvert Plan and Profile

Utility Coordination

ISG will provide utilities with final plans and right-of-way and easement exhibits and will continue to coordinate with utilities prior to reconstruction of School Avenue as needed.

Environmental

Permitting

Storm Water Pollution Prevention Plan (SWPPP)

ISG will prepare a Storm Water Pollution Prevention Plan for the scope of this proposed construction work. A stormwater pollution prevention plan will be prepared that incorporates Best Management Practices (BMPs). This plan will include the necessary erosion control measures to meet local and state requirements.

Bidding Assistance

ISG will assist in the preparation of an advertisement for bids to assist with solicitation of competitive general contractor bids. We are prepared to respond to contractor questions and issue clarifications via addendum if necessary. We will also provide assistance with bid evaluation, issuance of a recommendation of award, and preparation of the Notice to Proceed and Agreement between the City and Contractor.

Survey

Monumentation

Based on the boundary survey and the recorded right-of-way and easement documents, ISG will install iron monuments at the new property corners. It is anticipated that temporary monumentation will be set prior to construction and that after construction is completed final monumentation will be installed. This will include subsurface installation of ½-inch diameter, 20-inch-long solid iron rods, or other permanent monuments where applicable, at each of the new property corners. The locations will also be identified on the surface by wooden lath.

EXCLUSIONS

The following items are excluded from the scope of services in this proposal:

- Geotechnical Services
- Public Hearings
- Cultural Resources Surveys beyond Phase I
- Wetland Delineation
- Hazardous Material Surveys beyond Phase I
- Section 4(f) Evaluations
- Visual Impact Memo
- Noise Screening Analysis

Contract Amendment No. 1

South School Ave. – MLK Jr. Blvd to 15th St.

I & S Group, Inc. | 3100 Market Street + Suite 106 + Rogers, AR 72758 + 479.974.1601



- A NEPA Environmental Assessment, Finding of No Significant Impact, or Environmental Impact Statement
- LOMR
- Structural Engineering
- Construction Phase Services

SCHEDULE

ISG proposes the following schedule if the contract amendment is approved by May 1, 2015. This schedule is dependent upon the City receiving the approval of the NEPA document by July 1, 2026. The subsequent tasks are expected to be adjusted if that approval is delayed.

Phase	Date
Receive Final Environmental Clearance	July 1, 2026
Preliminary Plans (60%)	August 14, 2026
Right-of-way and Easement Documents	September 18 2026
Final Plans and Specifications for City Review (90%)	April 1, 2027
Final Construction Documents	June 1, 2027



APPENDIX B

COMPENSATION

ISG proposes to provide the scope of work described within this proposal for compensation in accordance with the following schedule. Anticipated reimbursable expenses such as travel time, mileage expenses, and printing costs are included.

Preliminary Design Phase	Compensation
Surveys	\$40,000.00
Environmental	\$24,000.00
Franchise Utility Coordination	\$10,000.00
Preliminary Plans (including box culvert addition)	\$139,000.00
Public Engagement	\$15,000.00
Total	\$228,000.00

Preliminary Design Phase – Water Utility	Compensation
Preliminary Plans	\$50,000.00
Total	\$50,000.00

Final Design Phase	Compensation
Survey	\$15,000.00
Franchise Utility Coordination	\$5,000.00
Final Plans	\$90,000.00
Total	\$110,000.00

Final Design Phase – Water Utility	Compensation
Final Plans	\$45,000.00
Total	\$45,000.00



Bidding Assistance	Compensation
Bidding Assistance	\$10,000.00
Total	\$10,000.00

Total Compensation for Contract Amendment 1	\$443,000.00
--	---------------------

Fee Summary

City of Fayetteville, AR
 S. School Ave. (MLK to 15th)
 ISG Project #32858



FAYETTEVILLE, AR (SS4) S. SCHOOL AVE PROJECT															
	Senior Civil Engineer	Civil Engineer IV	Civil Engineer II	Civil Engineer I	Civil Designer IV	Civil Designer III	Civil Designer II	Landscape Architect IV	Landscape Architect II	Senior Environmental Scientist	Environmental Scientist/Engineer III	Senior Land Surveyor	Geospatial Specialist III	Geospatial Specialist II	Total
	\$ 250.00	\$ 215.00	\$ 170.00	\$ 160.00	\$ 170.00	\$ 150.00	\$ 140.00	\$ 205.00	\$ 160.00	\$ 225.00	\$ 170.00	\$ 210.00	\$ 140.00	\$ 130.00	
SURVEY															
Prelim Phase															
Right-of-way and Easement Exhibits		22										132		58	\$ 39,990.00
Final Phase															
Temporary Monumentation		1											29	24	\$ 7,395.00
Final Monumentation		1										9	9	11	\$ 4,795.00
Expenses															\$ 2,815.00
															TASK TOTAL \$ 54,995.00
ENVIRONMENTAL															
Prelim Phase															
Project Management	1									6					\$ 1,600.00
Agency Coordination		1								2	13				\$ 2,875.00
Archaeology and History		1								2	4				\$ 1,345.00
Hazardous Materials											8				\$ 1,360.00
Environmental Document	1									3	14				\$ 3,305.00
Permitting										2	9				\$ 1,980.00
Wetland Delineation	1									5	60				\$ 11,575.00
															TASK TOTAL \$ 24,040.00
FRANCHISE UTILITY COORDINATION															
Prelim Phase															
Preliminary Plan Packages	1			5	5										\$ 1,900.00
Review of Utility Work Plans	2			15	15										\$ 5,450.00
Work Plan Revisions	1			8	8										\$ 2,890.00
Final Phase															
Final Plan Packages	2			8	8										\$ 3,140.00
Continued Coordination	1			4	4										\$ 1,570.00
															TASK TOTAL \$ 14,950.00

Fee Summary



PUBLIC UTILITIES														
Prelim Phase														
Preliminary Design	13	24		124			166							\$ 51,490.00
Final Phase														
Final Desgin	20	24		100			100							\$ 40,160.00
Permitting	8	8												\$ 3,720.00
													TASK TOTAL	\$ 95,370.00
Bidding														
Bidding	10	18		23										\$ 10,050.00
													TASK TOTAL	\$ 10,050.00
													GRAND TOTAL	\$ 443,590.00



CITY OF
FAYETTEVILLE
ARKANSAS

TRANSPORTATION QUARTERLY PROGRESS REPORT

Asphalt Paving Program

01/01/2026 – 01/31/2026:

During the month of January, when temperatures were not conducive to asphalt paving operations, the paving crew was reassigned to address a backlog of bridge maintenance requests from ARDOT. These activities included joint filling, streambank stabilization, and box culvert cleaning. Crews successfully completed maintenance on 17 bridges throughout Fayetteville. In addition, the crew assisted with snow removal operations during winter weather events.



Picture 1: North St. & Scull Creek Before



Picture 2 : North St. & Scull Creek After

02/01/2026 – 02/28/2026:

Bridge maintenance efforts continued through early and mid-February. In late February, training commenced on the newly acquired Caterpillar paver. To maximize training opportunities in advance of the paving plan, crews completed several large patching projects at N. Susan Carol Ln., W. Cleburn St., and W. 7th St.



Picture 3: Paver Training at City Shop



Picture 4: N. Susan Carol Ln.



Picture 5: W. Cleburn St.



Picture 6: W. 7th St.

03/01/2026 – 03/31/2026:

Crews initiated work on streets identified in the paving plan, beginning in Ward 3 due to Water and Sewer's replacement of the water main along E. Ridgeway Dr., W. Ridgeway Dr., N. Crestwood Dr., and N. Viewpoint Dr. Over the course of the next 4-5 weeks, crews anticipate completing approximately 1.49 miles of paving in Ward 3, representing 86% of the total paving scheduled for the ward.



Picture 7: E. Ridgeway Dr. Paving



Picture 8: E. Ridgeway Dr. Paving

Trails Program

01/01/2026 – 01/31/2026:

From early to mid-January, the trail crew supported bridge maintenance efforts by performing foundation repairs and concrete patching. In late January, the crew transitioned to the Woolsey Trail Project. The crew also assisted with snow removal operations during this period.



Picture 9: Concrete Bridge Patching



Picture 10: Bridge Foundation Repair

02/01/2026 – 02/28/2026:

Throughout February and into early March, the crew continued work on the Woolsey Trail Project. The existing trail section was replaced due to persistent surface water flowing across the trail, which created safety concerns for users. Improvements included the installation of approximately 210 linear feet of trail and five culverts to improve drainage.



Picture 11: Woolsey Trail



Picture 12: Woolsey Trail Culverts

03/01/2026 – 03/31/2026:

The Woolsey Trail Project was completed in early March. Following completion, the crew transitioned to the Hamstring Trail Project, where work began on constructing an access road to support construction activities.



Picture 13: Hamstring Trail Construction Access



Picture 14: Hamstring Trail Construction Access

Sidewalk Program

01/01/2026 – 01/31/2026:

Throughout January, the sidewalk crew assisted with bridge maintenance activities, including box culvert foundation repair and retaining wall repair. The crew also contributed to snow removal efforts and addressed service requests identified in the Concrete Construction Work Plan.



Picture 15:Box Culvert Foundation Repair



Picture 16:Retaining Wall Repair

02/01/2026 – 02/28/2026:

From early to mid-February, the crew continued addressing service requests outlined in the Concrete Construction Work Plan and has completed approximately 45% of the total identified requests to date. In late February, the crew initiated an unplanned project involving the construction of approximately 123 linear feet of concrete alley between Lincoln Ave. and N. Shady Ave. Work on this project continued into early March.



Picture 17:Alley Excavation



Picture 18:Completed Alley

03/01/2026 – 03/31/2026:

Upon completion of the alley project, the crew began the Cleveland St. Sidewalk Improvement Project, as identified in the Concrete Construction Work Plan. Work is expected to continue through the end of March before being temporarily paused due to the reallocation of resources to the Stephen Carr Memorial Project.



Picture 19: Cleveland St. Improvements



Picture 20: Cleveland St. Improvements

Attachments

2026-2027 Concrete Construction Work Plan

2026-2027 Paving Plan

2026 Proposed Shared-Use Paved Trail Construction Projects Plan

Projects highlighted in green are complete and projects highlighted in yellow are under construction or will be soon.

2026 Sidewalk Design Projects

Project Street	From	To	Placement	Type	Length Feet	Width Feet	Ward	Construction Time (Days)
Nettleship St.	Eastern Ave.	Graham Ave.	South Side	New	320	6	1	TBD
Oakland Ave.	Cleveland St.	Douglas St.	East Side	Rep./ New	290	6	2	TBD

2026 Primary Sidewalk Construction Projects

Project Street	From	To	Placement	Type	Length Feet	Width Feet	Ward	Construction Time (Days)
Cleveland St.	Leverett Ave.	Willis Ave.	North Side	New	806	6	2	88
15th St.	College Ave.	Kelly Lynn Driveway	South Side	New	501	5	1	24
SUBTOTAL								112

2026 Sidewalk Maintenance from Service Requests

Address	Ward	Description	Construction Time (Days)
4380 W. Pecan St.	1	Replace sidewalk 25 ft.	2
2133 S. Clover Dr.	1	Replace sidewalk 25 ft.	2
520 N. Washington Ave.	2	Replace sidewalk 75 ft.	4
311 W. Ila St.	2	Replace sidewalk 45 ft.	4
413 W. Center St.	2	Replace sidewalk 12 ft.	2
303 E. Sutton St.	2	Replace sidewalk 60 ft. & Replace curb 15 ft.	3
526 E. Lafayette St.	2	Replace sidewalk 40 ft.	3
251 E. Sycamore St.	2	Replace sidewalk 15 ft.	2
327 N. Willow Ave.	2	Install 4 ADA ramps	4
127 W. Mountain St.	2	Replace sidewalk 50 ft.	3
1018 N. Canterbury Rd.	3	Replace sidewalk 32 ft.	2
461 E. Fairway Ln.	3	Replace sidewalk 50 ft.	3
2507 N. Jimmie Ave.	3	Replace sidewalk 150 ft.	3
2531 N. Jimmie Ave.	3	Replace sidewalk 149 ft.	3
2515 E. Lancer St.	3	Replace sidewalk 25 ft.	2
E. Arapaho Dr.	3	Replace sidewalk 50 ft.	3
4677 W. Franciscan Trl.	4	Replace sidewalk 40 ft.	4
3103 N. Verona Ln.	4	Replace sidewalk 24 ft.	3
W. Ika Ln.	4	Replace sidewalk 40 ft.	3
2979 W. Ika Ln.	4	Replace sidewalk 42 ft.	3
3103 Verona Ln.	4	Replace sidewalk 25 ft.	3
E. Albright Rd.	4	Replace sidewalk 15 ft.	3
SUBTOTAL			64

2026 Misc. Maintenance from Service Requests

Address	Ward	Description	Construction Time (Days)
841 W. Lorena Ln.	1	Replace curb 45 ft.	3
1815 W. Arrowhead St.	1	Replace curb 40 ft.	3
275 S. Duncan Ave.	2	Replace curb 6 ft.	2
1039 E. Bonnie Ln.	3	Replace curb 250 ft.	5
2838 W. Vanike Dr.	4	Replace curb 2 ft.	1
SUBTOTAL			14
TOTAL (Days)			190

2027 Sidewalk Design Projects

Project Street	From	To	Placement	Type	Length Feet	Width Feet	Ward	Construction Time (Days)
Lindell Ave.	Hughs St.	Eagle St.	East Side	New	185	5	2	TBD
Leverett Ave.	Sycamore St.	Poplar St.	West Side	Rep.	1,325	6	2	TBD

2027 Primary Sidewalk Construction Projects

Project Street	From	To	Placement	Type	Length Feet	Width Feet	Ward	Construction Time (Days)
Nettleship St.	Eastern Ave.	Graham Ave.	South Side	New	320	6	1	TBD
Oakland Ave.	Cleveland St.	Douglas St.	East Side	Rep./ New	290	6	2	TBD

2026-2027 Secondary Sidewalk Construction Projects

Project Street	From	To	Placement	Type	Length Feet	Width Feet	Ward	Construction Time (Days)
Center St.	West Ave.	Razorback Greenway	South Side	New	288	8	2	24
Stearns St.	Joyce Ave.	Vantage Dr.	North Side	New	276	6	3	TBD
Hackberry Dr.	Amber Dr.	Overcrest St.	North Side	New	202	6	3	TBD

WARD 1													
Project ID	On Street	From Street	To Street	Pavement Width (ft)	Pavement Length (ft)	Pavement Area (yd2)	Current Segment PCI (CPCI)	Project Length (ft)	Project Current PCI	Rehab Activity	Average Unit Rate (\$/yd2)	Segment Total Cost (\$)	Whole Project Cost (\$)
15441	S COBALT AVE	NORTH END	E PEACEFUL DR	20	109	254	80.8	852	74	EM/FWM + Moderate Overlay (2.0 - 3.0) + SP (PCI 50-60)	\$18.25	\$4,636.00	\$47,360.00
15441	S COBALT AVE	E PEACEFUL DR	E ROYAL DR	27	298	939	71.9	852	74	EM/FWM + Moderate Overlay (2.0 - 3.0) + SP (PCI 50-60)	\$18.25	\$17,137.00	\$47,360.00
15441	S COBALT AVE	E ROYAL DR	ALLEY 2443	27	119	376	72.8	852	74	EM/FWM + Moderate Overlay (2.0 - 3.0) + SP (PCI 50-60)	\$18.25	\$6,862.00	\$47,360.00
15441	S COBALT AVE	ALLEY 2443	E HISTORY ST	27	157	495	75.9	852	74	EM/FWM + Moderate Overlay (2.0 - 3.0) + SP (PCI 50-60)	\$18.25	\$9,034.00	\$47,360.00
15441	S COBALT AVE	E HISTORY ST	ALLEY 2547	27	168	531	74.5	852	74	EM/FWM + Moderate Overlay (2.0 - 3.0) + SP (PCI 50-60)	\$18.25	\$9,691.00	\$47,360.00
15631	S CHURCH AVE	W ROCK ST	W SOUTH ST	25	618	1,801	59.7	618	60	EM/FWM + Moderate Overlay (2.0 - 3.0) + SP (PCI 40-50)	\$18.25	\$32,868.00	\$32,868.00
3620	E HISTORY ST	S SUGARBUSH AVE	S DEAD HORSE MOUNTAIN RD	20	207	482	78	207	78	EM/FWM + Moderate Overlay (2.0 - 3.0) + SP (PCI 50-60)	\$18.25	\$8,797.00	\$8,797.00
3630	E HISTORY ST	S COBALT AVE	S SUGARBUSH AVE	27	555	1,747	74	756	75	EM/FWM + Moderate Overlay (2.0 - 3.0) + SP (PCI 50-60)	\$18.25	\$31,883.00	\$40,442.00
3630	E HISTORY ST	S DEAD HORSE MOUNTAIN RD	S SUGARBUSH AVE	20	201	469	78	756	75	EM/FWM + Moderate Overlay (2.0 - 3.0) + SP (PCI 50-60)	\$18.25	\$8,559.00	\$40,442.00
4900	E PEACEFUL DR	WEST END	S COBALT AVE	19	126	280	73	989	70	EM/FWM + Moderate Overlay (2.0 - 3.0) + SP (PCI 50-60)	\$18.25	\$5,110.00	\$48,563.00
4900	E PEACEFUL DR	S COBALT AVE	S SUGARBUSH AVE	25	668	1,948	70	989	70	EM/FWM + Moderate Overlay (2.0 - 3.0) + SP (PCI 50-60)	\$18.25	\$35,551.00	\$48,563.00
4900	E PEACEFUL DR	S SUGARBUSH AVE	S DEAD HORSE MOUNTAIN RD WC 55	19	195	433	71	989	70	EM/FWM + Moderate Overlay (2.0 - 3.0) + SP (PCI 50-60)	\$18.25	\$7,902.00	\$48,563.00
5300	E ROYAL DR	WEST END	S COBALT AVE	20	131	306	81	744	76	EM/FWM + Moderate Overlay (2.0 - 3.0) + SP (PCI 50-60)	\$18.25	\$5,585.00	\$39,512.00
5300	E ROYAL DR	S COBALT AVE	S SUGARBUSH AVE	26	613	1,859	75	744	76	EM/FWM + Moderate Overlay (2.0 - 3.0) + SP (PCI 50-60)	\$18.25	\$33,927.00	\$39,512.00
17660	S SUGARBUSH AVE	E PEACEFUL DR	E ROYAL DR	20	252	587	75.7	548	75	EM/FWM + Moderate Overlay (2.0 - 3.0) + SP (PCI 50-60)	\$18.25	\$10,713.00	\$22,704.00
17660	S SUGARBUSH AVE	E ROYAL DR	ALLEY 2443	19	144	319	78.2	548	75	EM/FWM + Moderate Overlay (2.0 - 3.0) + SP (PCI 50-60)	\$18.25	\$5,822.00	\$22,704.00
17660	S SUGARBUSH AVE	ALLEY 2443	E HISTORY ST	19	153	338	70	548	75	EM/FWM + Moderate Overlay (2.0 - 3.0) + SP (PCI 50-60)	\$18.25	\$6,169.00	\$22,704.00
TOTAL											\$240,246.00	0.89 MILES	

WARD 2													
Project ID	On Street	From Street	To Street	Pavement Width (ft)	Pavement Length (ft)	Pavement Area (yd2)	Current Segment PCI (CPCI)	Project Length (ft)	Project Current PCI	Rehab Activity	Average Unit Rate (\$/yd2)	Segment Total Cost (\$)	Whole Project Cost (\$)
9310	N GREGG AVE	W PROSPECT ST	W CLEBURN ST	26	310	939	79.1	617	86	EM/FWM + Moderate Overlay (2.0 - 3.0) + SP (PCI 40-50)	\$18.25	\$17,137.00	\$30,222.00
9310	N GREGG AVE	W CLEBURN ST	W HAWTHORN ST	20	307	717	94.5	617	86	EM/FWM + Moderate Overlay (2.0 - 3.0) + SP (PCI 40-50)	\$18.25	\$13,085.00	\$30,222.00
9320	N GREGG AVE	W HAWTHORN ST	W ADAMS ST	25	341	993	55.8	710	43	EM/FWM + Moderate Overlay (2.0 - 3.0) + SP (PCI 40-50)	\$18.25	\$18,122.00	\$44,895.00
9320	N GREGG AVE	W ADAMS ST	W NORTH ST	34	370	1,467	33.9	710	43	EM/FWM + Moderate Overlay (2.0 - 3.0) + SP (PCI 40-50)	\$18.25	\$26,773.00	\$44,895.00
3820	E JOHNSON ST	N OLIVE AVE	ALLEY 534	21	190	466	58	537	56	EM/FWM + Moderate Overlay (2.0 - 3.0) + SP (PCI 40-50)	\$18.25	\$8,505.00	\$21,809.00
3820	E JOHNSON ST	ALLEY 534	N MISSION BLVD	18	347	729	55	537	56	EM/FWM + Moderate Overlay (2.0 - 3.0) + SP (PCI 40-50)	\$18.25	\$13,304.00	\$21,809.00
11750	N PORTER RD	W WEDINGTON DR	W VALLEY DR	21	418	1,025	68.9	3081	77	EM/FWM + Moderate Overlay (2.0 - 3.0) + SP (PCI 40-50)	\$18.25	\$18,706.00	\$156,166.00
11750	N PORTER RD	W VALLEY DR	W HATFIELD ST	20	55	127	70.6	3081	77	EM/FWM + Moderate Overlay (2.0 - 3.0) + SP (PCI 40-50)	\$18.25	\$2,318.00	\$156,166.00
11750	N PORTER RD	W HATFIELD ST	W HOLLY ST	25	358	1,044	80.1	3081	77	EM/FWM + Moderate Overlay (2.0 - 3.0) + SP (PCI 40-50)	\$18.25	\$19,053.00	\$156,166.00
11750	N PORTER RD	W HOLLY ST	W LAWSON ST	24	182	509	80	3,081	77	EM/FWM + Moderate Overlay (2.0 - 3.0) + SP (PCI 40-50)	\$18.25	\$9,289.00	\$156,166.00
11750	N PORTER RD	W LAWSON ST	W CORNERSTONE PL	26	169	512	80.6	3081	77	EM/FWM + Moderate Overlay (2.0 - 3.0) + SP (PCI 40-50)	\$18.25	\$9,344.00	\$156,166.00
11750	N PORTER RD	W CORNERSTONE PL	W MEGAN DR	24	342	959	60	3081	77	EM/FWM + Moderate Overlay (2.0 - 3.0) + SP (PCI 40-50)	\$18.25	\$17,502.00	\$156,166.00
11750	N PORTER RD	W MEGAN DR	W SKYLER DR	25	276	804	66	3,081	77	EM/FWM + Moderate Overlay (2.0 - 3.0) + SP (PCI 40-50)	\$18.25	\$14,673.00	\$156,166.00
11750	N PORTER RD	W SKYLER DR	W HOUSTON ST	25	508	1,482	82	3,081	77	EM/FWM + Moderate Overlay (2.0 - 3.0) + SP (PCI 40-50)	\$18.25	\$27,047.00	\$156,166.00
11750	N PORTER RD	W HOUSTON ST	W SYCAMORE ST	25	334	975	88	3,081	77	EM/FWM + Moderate Overlay (2.0 - 3.0) + SP (PCI 40-50)	\$18.25	\$17,794.00	\$156,166.00
11750	N PORTER RD	W SYCAMORE ST	DS@306N W SYCAMORE ST	24	306	856	82.7	3081	77	EM/FWM + Moderate Overlay (2.0 - 3.0) + SP (PCI 40-50)	\$18.25	\$15,822.00	\$156,166.00
11750	N PORTER RD	DS@306N W SYCAMORE ST	ROUNDABOUT 1010	19	66	147	92.5	3081	77	EM/FWM + Moderate Overlay (2.0 - 3.0) + SP (PCI 40-50)	\$18.25	\$2,683.00	\$156,166.00
11750	N PORTER RD	ROUNDABOUT 1010	N PORTER RD	15	67	117	95.1	3081	77	EM/FWM + Moderate Overlay (2.0 - 3.0) + SP (PCI 40-50)	\$18.25	\$2,135.00	\$156,166.00
14550	N WILSON AVE	W MAPLE ST	W ILA ST	24	379	1,062	22.8	379	23	EM/FWM + Moderate Overlay (2.0 - 3.0) + SP (PCI 40-50)	\$18.25	\$19,382.00	\$19,382.00
	ALLEY 444	E JOHNSON ST	E GUNTER ST	20	320	712		320		Pave Gravel Alley	\$18.25	\$12,994.00	\$12,994.00
	ALLEY 456	E JOHNSON ST	E GUNTER ST	20	320	712		320		Pave Gravel Alley	\$18.25	\$12,994.00	\$12,994.00
TOTAL											\$298,462.00	1.13 MILES	

WARD 3													
Project ID	On Street	From Street	To Street	Pavement Width (ft)	Pavement Length (ft)	Pavement Area (yd2)	Current Segment PCI (CPCI)	Project Length (ft)	Project Current PCI	Rehab Activity	Average Unit Rate (\$/yd2)	Segment Total Cost (\$)	Whole Project Cost (\$)
1970	E APPLEBURY DR	E HOPE ST	WEST END	27	294	935	33	294	33	EM/FWM + Moderate Overlay (2.0 - 3.0) + SP (PCI 40-50)	\$18.25	\$17,064.00	\$17,064.00
8100	N CRESTWOOD DR	W RIDGEWAY DR	W RIDGEWAY DR	26	1,856	5,631	89.2	1856	89	EM/FWM + Moderate Overlay (2.0 - 3.0) + SP (PCI 50-60)	\$18.25	\$102,766.00	\$102,766.00
5180	E RIDGEWAY DR	W RIDGEWAY DR	E SHADOWRIDGE DR	18	518	1,087	83.9	3052	89	EM/FWM + Moderate Overlay (2.0 - 3.0) + SP (PCI 50-60)	\$18.25	\$19,838.00	\$125,232.00
5180	E RIDGEWAY DR	E SHADOWRIDGE DR	PUBLIC 1350	20	1,332	3,108	89	3,052	89	EM/FWM + Moderate Overlay (2.0 - 3.0) + SP (PCI 50-60)	\$18.25	\$56,721.00	\$125,232.00
5180	E RIDGEWAY DR	PUBLIC 1350	W RIDGEWAY DR	19	1,203	2,667	92	3,052	89	EM/FWM + Moderate Overlay (2.0 - 3.0) + SP (PCI 50-60)	\$18.25	\$48,673.00	\$125,232.00
22560	W RIDGEWAY DR	N SHREWSBURY LN	E RIDGEWAY DR	24	136	380	80	863	84	EM/FWM + Moderate Overlay (2.0 - 3.0) + SP (PCI 50-60)	\$18.25	\$6,935.00	\$42,140.00
22560	W RIDGEWAY DR	E RIDGEWAY DR	N CRESTWOOD DR	21	473	1,159	88	863	84	EM/FWM + Moderate Overlay (2.0 - 3.0) + SP (PCI 50-60)	\$18.25	\$21,152.00	\$42,140.00
22560	W RIDGEWAY DR	N CRESTWOOD DR	N VIEWPOINT DR	26	254	770	81.7	863	84	EM/FWM + Moderate Overlay (2.0 - 3.0) + SP (PCI 50-60)	\$18.25	\$14,053.00	\$42,140.00
22570	W RIDGEWAY DR	N VIEWPOINT DR	E HAMMOND ST	19	1,289	2,856	89	1,808	88	EM/FWM + Moderate Overlay (2.0 - 3.0) + SP (PCI 50-60)	\$18.25	\$52,122.00	\$72,015.00
22570	W RIDGEWAY DR	E HAMMOND ST	E RIDGEWAY DR	18	519	1,090	85	1,808	88	EM/FWM + Moderate Overlay (2.0 - 3.0) + SP (PCI 50-60)	\$18.25	\$19,893.00	\$72,015.00
12290	N ROSEWOOD DR	SOUTH END	N SHERYL AVE	38	269	1,199	87.3	269	87	EM/FWM + Moderate Overlay (2.0 - 3.0) + SP (PCI 40-50)	\$18.25	\$21,882.00	\$21,882.00
12821	N SHERYL AVE	N ROSEWOOD DR	WEST END	33	594	2,285	75.9	1033	79	EM/FWM + Moderate Overlay (2.0 - 3.0) + SP (PCI 40-50)	\$18.25	\$41,701.00	\$68,821.00
12821	N SHERYL AVE	N ROSEWOOD DR	E OAKS MANOR DR	29	439	1,486	82.7	1033	79	EM/FWM + Moderate Overlay (2.0 - 3.0) + SP (PCI 40-50)	\$18.25	\$27,120.00	\$68,821.00
	N OLD WIRE RD & N OLD MISSOURI RD INTERSECTION					2,500				EM/FWM + Moderate Overlay (2.0 - 3.0) + SP (PCI 40-50)	\$18.25	\$45,625.00	\$45,625.00
TOTAL											\$495,545.00	1.74 MILES	

WARD 4													
Project ID	On Street	From Street	To Street	Pavement Width (ft)	Pavement Length (ft)	Pavement Area (yd2)	Current Segment PCI (CPCI)	Project Length (ft)	Project Current PCI	Rehab Activity	Average Unit Rate (\$/yd2)	Segment Total Cost (\$)	Whole Project Cost (\$)
12540	N SALEM RD	W WEDINGTON DR	PRIVATE 3400	45	377	1,978	68.7	3526	74	EM/FWM + Moderate Overlay (2.0 - 3.0) + SP (PCI 40-50)	\$18.25	\$36,099.00	\$228,382.00
12540	N SALEM RD	PRIVATE 3400	W MICA ST	30	403	1,411	79	3,526	74	EM/FWM + Moderate Overlay (2.0 - 3.0) + SP (PCI 40-50)	\$18.25	\$25,751.00	\$228,382.00
12540	N SALEM RD	W MICA ST	N TIMBERLINE DR	28	654	2,135	76	3,526	74	EM/FWM + Moderate Overlay (2.0 - 3.0) + SP (PCI 40-50)	\$18.25	\$38,964.00	\$228,382.00
12540	N SALEM RD	N TIMBERLINE DR	W VASSAR ST	29	95	320	74	3,526	74	EM/FWM + Moderate Overlay (2.0 - 3.0) + SP (PCI 40-50)	\$18.25	\$5,840.00	\$228,382.00
12540	N SALEM RD	W VASSAR ST	W CORNELL ST	30	269	940	81.1	3526	74	EM/FWM + Moderate Overlay (2.0 - 3.0) + SP (PCI 40-50)	\$18.25	\$17,155.00	\$228,382.00
12540	N SALEM RD	W CORNELL ST	W PRINCETON ST	29	272	920	80.6	3526	74	EM/FWM + Moderate Overlay (2.0 - 3.0) + SP (PCI 40-50)	\$18.25	\$16,790.00	\$228,382.00
12540	N SALEM RD	W PRINCETON ST	W YALE ST	29	270	912	79.6	3526	74	EM/FWM + Moderate Overlay (2.0 - 3.0) + SP (PCI 40-50)	\$18.25	\$16,644.00	\$228,382.00
12540	N SALEM RD	W YALE ST	W HARVARD ST	29	268	908	79.1	3526	74	EM/FWM + Moderate Overlay (2.0 - 3.0) + SP (PCI 40-50)	\$18.25	\$16,571.00	\$228,382.00
12540	N SALEM RD	W HARVARD ST	W BUCKEYE ST	28	273	892	83.4	3526	74	EM/FWM + Moderate Overlay (2.0 - 3.0) + SP (PCI 40-50)	\$18.25	\$16,279.00	\$228,382.00
12540	N SALEM RD	W BUCKEYE ST	W ESSEX DR	27	267	841	62.6	3526	74	EM/FWM + Moderate Overlay (2.0 - 3.0) + SP (PCI 40-50)	\$18.25	\$15,348.00	\$228,382.00
12540	N SALEM RD	W ESSEX DR	W FAIRFAX ST	29	274	926	51	3526	74	EM/FWM + Moderate Overlay (2.0 - 3.0) + SP (PCI 40-50)	\$18.25	\$16,900.00	\$228,382.00
12540	N SALEM RD	W FAIRFAX ST	NORTH END	27	105	331	81.5	3526	74	EM/FWM + Moderate Overlay (2.0 - 3.0) + SP (PCI 40-50)	\$18.25	\$6,041.00	\$228,382.00
TOTAL											\$228,382.00	0.67 MILES	

	Length (mi)	% Length	Cost	% Cost
Ward 1	0.89	20.16%	\$240,246.00	19.03%
Ward 2	1.13	25.51%	\$298,462.00	23.64%
Ward 3	1.74	39.25%	\$495,545.00	39.25%
Ward 4	0.67	15.08%	\$228,382.00	18.09%
Total	4.43	100%	\$1,262,635.00	100%



2026 Proposed Shared-Use Paved Trail Construction Projects

2026

		Prioritization Score*	Funding	Rank	Ward	Feet	Miles
Hamestring Creek Trail	Salem Rd. to Ruppel Rd. (1 Bridge)	45.5	Trail CIP	13	4	2,386	0.45
Wedington Trail	Futrell Dr. to West End	N/A	Trail CIP	N/A	2	593	0.11
Alberta Trail	Connection to Farmington Trails	36.3	Trail CIP	22	1	1,816	0.34
Drake Trail Extension to Gordon Long (Contractor)	Gordon Long Park to College Ave. (Includes a bridge over Scull Creek)	49.5	TAP Grant	11	3	4,535	0.86
Maple Street Cycle Track (Contractor)	Razorback Greenway to Garland Ave.	53.8	Safe Streets For All / U of A	3	2	2,699	0.51
Garland Avenue (Contractor)	Poplar to Drake St.	N/A	Trans. Bond & ARDOT	N/A	2	4,554	0.86
Highway 112 (Garland Ave./Howard Nickell) (ARDOT Project)	Truckers Drive to Howard Nickell Includes Clabber Creek Tunnel	N/A	ARDOT & Grants	N/A	4	6,373	1.21
Tsa La Gi Trail (Hwy 62 MLK & I-49) ARDOT Project	Best Way to Lefler Ln. & Shiloh Trail from MLK to 15th St. overpass to Town Branch	56.7	ARDOT & Grants	1	1	9,102	1.72
White River Greenway (River Commons)	St. Paul Trail to Dead Horse Mtn.	N/A	CPRG Grant Funded	N/A	1	12,856	2.43



CITY OF
FAYETTEVILLE
ARKANSAS

ENGINEERING QUARTERLY PROGRESS REPORT

Sidewalk Program

2026 Construction Projects

Cleveland Street:

The Engineering Division is currently providing construction support to the Transportation Division. Tasks include construction staking, plan clarification, design modifications, and inspection.

15th Street:

During the right-of-way acquisition process, it was determined that Kelly Holdings LLC and Neighbors of 55 E. 15th Street LLC are involved in an ongoing property line dispute, with a court date scheduled. Based on the recommendation from the City Attorney's Office, the project should remain on hold until a decision is reached in the case. Additionally, the construction plans have been approved by ARDOT, and a permit will be issued once the court case is resolved.

Due to the delay on the 15th Street project, Transportation will substitute the Center Street Sidewalk Improvements, which is listed under the Secondary Sidewalk Construction Projects in the 2026–2027 Concrete Construction Work Plan.

2026 Design Projects

Nettleship Street: Project is currently awaiting survey.

Oakland Ave: Project is currently awaiting survey.

Next Quarter Work Plan

Begin work on the construction plans for Nettleship Street and Oakland Ave which are included in the 2026-2027 Concrete Construction Work Plan.

Trails Program

2026 Construction Projects

Hamstring Creek Trail:

The Engineering Division is currently providing construction support to the Transportation Division. Tasks include construction staking, plan clarification, design modifications, and inspection.

2026 Design Projects

White River Greenway (River Commons):

Crafton Tull is currently working on the 90% construction plans. The goal is to bid the project in summer 2026.

South of Huntsville Connection:

Olsson is currently working on the flood study. Additionally, the Engineering Division is in the process of acquiring easements.

Next Quarter Work Plan

Begin work on the construction plans for the South of Huntsville Connection and the Ash Side Path which are included in the 2026-2031 Proposed Shared-Use Paved Trail Construction Projects Plan.

Attachments

2026-2027 Concrete Construction Work Plan

2026 Proposed Shared-Use Paved Trail Construction Projects Plan

2026 Sidewalk Design Projects

Project Street	From	To	Placement	Type	Length Feet	Width Feet	Ward	Construction Time (Days)
Nettleship St.	Eastern Ave.	Graham Ave.	South Side	New	320	6	1	TBD
Oakland Ave.	Cleveland St.	Douglas St.	East Side	Rep./ New	290	6	2	TBD

2026 Primary Sidewalk Construction Projects

Project Street	From	To	Placement	Type	Length Feet	Width Feet	Ward	Construction Time (Days)
Cleveland St.	Leverett Ave.	Willis Ave.	North Side	New	806	6	2	88
15th St.	College Ave.	Kelly Lynn Driveway	South Side	New	501	5	1	24
SUBTOTAL								112

2026 Sidewalk Maintenance from Service Requests

Address	Ward	Description	Construction Time (Days)
4380 W. Pecan St.	1	Replace sidewalk 25 ft.	2
2133 S. Clover Dr.	1	Replace sidewalk 25 ft.	2
520 N. Washington Ave.	2	Replace sidewalk 75 ft.	4
311 W. Ila St.	2	Replace sidewalk 45 ft.	4
413 W. Center St.	2	Replace sidewalk 12 ft.	2
303 E. Sutton St.	2	Replace sidewalk 60 ft. & Replace curb 15 ft.	3
526 E. Lafayette St.	2	Replace sidewalk 40 ft.	3
251 E. Sycamore St.	2	Replace sidewalk 15 ft.	2
327 N. Willow Ave.	2	Install 4 ADA ramps	4
127 W. Mountain St.	2	Replace sidewalk 50 ft.	3
1018 N. Canterbury Rd.	3	Replace sidewalk 32 ft.	2
461 E. Fairway Ln.	3	Replace sidewalk 50 ft.	3
2507 N. Jimmie Ave.	3	Replace sidewalk 150 ft.	3
2531 N. Jimmie Ave.	3	Replace sidewalk 149 ft.	3
2515 E. Lancer St.	3	Replace sidewalk 25 ft.	2
E. Arapaho Dr.	3	Replace sidewalk 50 ft.	3
4677 W. Franciscan Trl.	4	Replace sidewalk 40 ft.	4
3103 N. Verona Ln.	4	Replace sidewalk 24 ft.	3
W. Ika Ln.	4	Replace sidewalk 40 ft.	3
2979 W. Ika Ln.	4	Replace sidewalk 42 ft.	3
3103 Verona Ln.	4	Replace sidewalk 25 ft.	3
E. Albright Rd.	4	Replace sidewalk 15 ft.	3
SUBTOTAL			64

2026 Misc. Maintenance from Service Requests

Address	Ward	Description	Construction Time (Days)
841 W. Lorena Ln.	1	Replace curb 45 ft.	3
1815 W. Arrowhead St.	1	Replace curb 40 ft.	3
275 S. Duncan Ave.	2	Replace curb 6 ft.	2
1039 E. Bonnie Ln.	3	Replace curb 250 ft.	5
2838 W. Vanike Dr.	4	Replace curb 2 ft.	1
SUBTOTAL			14
TOTAL (Days)			190

2027 Sidewalk Design Projects

Project Street	From	To	Placement	Type	Length Feet	Width Feet	Ward	Construction Time (Days)
Lindell Ave.	Hughs St.	Eagle St.	East Side	New	185	5	2	TBD
Leverett Ave.	Sycamore St.	Poplar St.	West Side	Rep.	1,325	6	2	TBD

2027 Primary Sidewalk Construction Projects

Project Street	From	To	Placement	Type	Length Feet	Width Feet	Ward	Construction Time (Days)
Nettleship St.	Eastern Ave.	Graham Ave.	South Side	New	320	6	1	TBD
Oakland Ave.	Cleveland St.	Douglas St.	East Side	Rep./ New	290	6	2	TBD

2026-2027 Secondary Sidewalk Construction Projects

Project Street	From	To	Placement	Type	Length Feet	Width Feet	Ward	Construction Time (Days)
Center St.	West Ave.	Razorback Greenway	South Side	New	288	8	2	24
Stearns St.	Joyce Ave.	Vantage Dr.	North Side	New	276	6	3	TBD
Hackberry Dr.	Amber Dr.	Overcrest St.	North Side	New	202	6	3	TBD



2026 - 2031 Proposed Shared-Use Paved Trail Construction Projects

ATAC Approved
12/10/25

2026

		Prioritization Score*	Funding	Rank	Ward	Feet	Miles
Hamestring Creek Trail	Salem Rd. to Ruppel Rd. (1 Bridge)	45.5	Trail CIP	13	4	2,386	0.45
Wedington Trail	Futrall Dr. to West End	N/A	Trail CIP	N/A	2	593	0.11
Alberta Trail	Connection to Farmington Trails	36.3	Trail CIP	22	1	1,816	0.34
Drake Trail Extension to Gordon Long (Contractor)	Gordon Long Park to College Ave. (Includes a bridge over Scull Creek)	49.5	TAP Grant	11	3	4,535	0.86
Maple Street Cycle Track (Contractor)	Razorback Greenway to Garland Ave.	53.8	Safe Streets For All / U of A	3	2	2,699	0.51
Garland Avenue (Contractor)	Poplar to Drake St.	N/A	Trans. Bond & ARDOT	N/A	2	4,554	0.86
Highway 112 (Garland Ave./Howard Nickell) (ARDOT Project)	Truckers Drive to Howard Nickell Includes Clabber Creek Tunnel	N/A	ARDOT & Grants	N/A	4	6,373	1.21
Tsa La Gi Trail (Hwy 62 MLK & I-49) ARDOT Project	Best Way to Lefler Ln. & Shiloh Trail from MLK to 15th St. overpass to Town Branch	56.7	ARDOT & Grants	1	1	9,102	1.72
White River Greenway (River Commons)	St. Paul Trail to Dead Horse Mtn.	N/A	CPRG Grant Funded	N/A	1	12,856	2.43

In-house Constructed: 0.91 Year Total 9.35

2027

Persimmon Trail (Owl Creek Trail)	Betty Jo to Ruppel Road	46.2	Trail CIP	12	4	1,959	0.37
Hwy 62 (MLK Jr. Blvd.) (Schedule dependent on ARDOT)	Lefler Ln. to Ruppel Road and Ozark Trail	56.7	2026 Trail Bond & Developer Build	1	1	3,574	0.68
South of Huntsville Connection	Teal to Fairlane & Swift to Jaybird Floodway issues	50.6	Trail CIP	7	1	884	0.17
Trail Reconstruction	Scull Creek Trail (Frisco to Meadow Valley)	N/A	TAP Grant	N/A	2	6,200	1.17

In-house Constructed: 2.39 Year Total 2.39

2028

Skilern Rd. (Sidepath South Side)	Crossover Rd. to Charleston Crossing	44.2	Trail CIP	23	3	2,320	0.44
Midtown Trail (Ash Side Path)	Woodland to College & Rayview Dr. to Old Wire	52.6	2026 Trail Bond & Ramay School	12	4	2,785	0.53
Clabber Creek Trail	Truckers Drive to Highway 112	47.8	Developer Build	11	4	1,753	0.33
Mission Blvd. Trail (Phase 3)	South of Rush Dr. to Maple St.	49.3	Future Grant Funding	10	2	2,092	0.40
Old Wire/Old Missouri Trail	Gulley Park to Rolling Hills (Includes Hilldale Connection & Crosswalk)	50.9	Undetermined	6	3	3,916	0.74
Trail Reconstruction	Various Locations	N/A	Trail CIP/Bond	N/A	N/A	2,500	0.47

In-house Constructed: 1.61 Year Total 2.91

2029

Shiloh Trail (Wedington to MLK) & Old Farmington to Centennial Park	ARDOT Permit - Watching for Development to occur	52.5	Trail CIP	5	4	7,359	1.39
Mt. Comfort Side Path	Salem Rd. to I-49	45.5	Undetermined	13	4	4,845	0.92
Trail Reconstruction	Various Locations	N/A	Trail CIP/Bond	N/A	N/A	2,500	0.47

In-house Constructed: 1.87 Year Total 2.78

2030

Markham Hill Trail Connector	Razorback Road to Cross Ave.	41.3	Trail CIP	17	4	1,500	0.28
Shiloh Trail (Moore Ln. to Wedington)	ARDOT Permit & Bridge over Hamestring Watching for Development to occur	52.2	Trail CIP	3	4	5,955	1.13
Trail Reconstruction	Various Locations	N/A	Trail CIP	N/A	N/A	2,500	0.47

In-house Constructed: 1.89 Year Total 1.89

2031

Owl Creek Trail	Existing trail end west of Ruppel Rd. to Broyles Road	46.2	Trail CIP	12	4	2,767	0.52
St. Paul Trail	Razorback Gwy. to St. Paul Trail (includes replacement of existing trail)	44.8	Undetermined	14	1	9,574	1.81
St. Paul Trail (Paddle Park Connection)	Armstrong to Dead House Mtn.	42.9	Undetermined	15	1	4,702	0.89
Trail Reconstruction	Various Locations	N/A	Trail CIP	N/A	N/A	2,500	0.47

In-house Constructed: 2.81 Year Total 3.70

5 Year Total 117,099 22.18

Notes:

In-House Trail Crew Build	Future Trail Bond Funded Project	Other Funding	Ward 1 Total	42,508	8.05
*Trail development of approximately 2 miles per year is based on continued CIP, Future Bond and Grant funding			Ward 2 Total	16,138	3.06
*Prioritization Score reflects weighting established by ATAC - Maximum score if 56.7			Ward 3 Total	10,771	2.04
			Ward 4 Total	37,682	7.14
				117,099	22.18



MEETING OF MARCH 31, 2026

TO: Mayor Rawn and City Council

THROUGH: Matt Mihalevich, Active Transportation Manager
Chris Brown, Public Works Director

FROM: Dane Eifling, Mobility Coordinator

SUBJECT: **An amendment to resolution 219-25 to include an additional 10 benches for bus stops**

RECOMMENDATION:

Staff recommends an amendment to resolution 219-25 to include an additional 10 benches for bus stops from Brasco International in the amount of \$9,025.00 plus applicable taxes.

BACKGROUND:

Resolution 219-25 approved 25 transit stop shelters structures and 3 benches from Brasco Internation in the amount of \$269,700.00 plus applicable taxes, as part of the transit stop improvement grant approved by Council in August 2025 to accept \$203,317.25. In order to provide the required 1:1 match Ozark Regional and Razorback Transit have each committed to providing \$50,829.30 for a total of \$101,658.60 with City committing to match \$101,658.65. The grant requires that a minimum of 17 stops be improved by September 30th of 2026. The total project funds (\$406,634.50) are sufficient to improve approximately 30 stops.

DISCUSSION:

Staff requests a waiver of competitive bidding requirements for this purchase as both transit agencies require Brasco International per their standards for all shelters and seating. The additional benches will allow for additional transit stops to include benches and expand the goal of including transit amenities at every transit stop in Fayetteville. Ozark Regional and Razorback Transit are responsible for maintenance of all bus shelters and benches once installed.

BUDGET/STAFF IMPACT:

The Transit Stop Infrastructure project has sufficient funds for this purchase.

ATTACHMENTS: 3. Staff Review Form, 4. Brasco Quote_10 Benches, 5. UA E-Mail Statement Standards for Bus Shelters, 6. ORT Email Bus Shelter Standards



City of Fayetteville, Arkansas

113 West Mountain Street
Fayetteville, AR 72701
(479) 575-8323

Legislation Text

File #: 2026-807

A RESOLUTION TO WAIVE COMPETITIVE BIDDING AND AUTHORIZE THE PURCHASE OF 10 ADDITIONAL BUS STOP BENCHES IN THE AMOUNT OF \$9,025.00, PLUS ANY APPLICABLE SALES TAXES AND SHIPPING CHARGES, FROM BRASCO INTERNATIONAL

WHEREAS, on August 19, 2025, the City Council passed Resolution 189-25 authorizing an agreement with the Northwest Arkansas Regional Planning Commission to accept \$203,317.25 in grant funding to support transit stop improvements; and

WHEREAS, on October 7, 2025, the City Council passed Resolution 219-25 authorizing the purchase of transit stop shelter structures and benches; and

WHEREAS, the additional benches will allow for additional transit stops to include benches and expand the goal of including transit amenities at every transit stop in Fayetteville; and

WHEREAS, Ozark Regional Transit and Razorback Transit both require Brasco International equipment per their standards for all shelters and seating.

NOW, THEREFORE, BE IT RESOLVED BY THE CITY COUNCIL OF THE CITY OF FAYETTEVILLE, ARKANSAS:

Section 1: That the City Council of the City of Fayetteville, Arkansas hereby determines an exceptional situation exists in which competitive bidding is deemed not feasible or practical and therefore waives the requirements of formal competitive bidding and authorizes the purchase of 10 additional bus stop benches in the amount of \$9,025.00, plus any applicable sales taxes and shipping charges, from Brasco International.

City of Fayetteville Staff Review Form

2026-807

Item ID

4/7/2026

City Council Meeting Date - Agenda Item Only
N/A for Non-Agenda Item

Sara Combs

3/13/2026

ENGINEERING (621)

Submitted By

Submitted Date

Division / Department

Action Recommendation:

Staff recommends an amendment to resolution 219-25 to include an additional 10 benches for bus stops from Brasco International in the amount of \$9,025 plus applicable taxes.

Budget Impact:

4470.800.8820-5809.00

Street Improvements

Account Number

Fund

25004.2501

Transit Stop Infrastructure, NWARPC WFF Grant

Project Number

Project Title

Budgeted Item? Yes

Total Amended Budget

\$ 486,637.00

Expenses (Actual+Encum)

\$ 279,700.00

Available Budget

\$ 206,937.00

Does item have a direct cost? Yes

Item Cost

\$ 9,025.00

Is a Budget Adjustment attached? No

Budget Adjustment

\$ -

Remaining Budget

\$ 197,912.00

V20221130

Purchase Order Number: _____

Previous Ordinance or Resolution # _____

Change Order Number: _____

Approval Date: _____

Original Contract Number: _____

Comments: Item cost above includes estimated taxes.



QUOTE

Quote Number: 031226R1
 Quote Date: March 12, 2026
 Quote Expiration: 60 Days from Quote Date
 Return to: iriley@brasco.com

Quoted for:
 City of Fayetteville
 Sara Combs
 479-575-8291
 SCombs@fayetteville-ar.gov

PREPARED BY	PROJECT NAME	PAYMENT TERMS (WITH APPROVED CREDIT)	LEAD TIME
Ian Riley	Benches	NET 30	± 18-20 Weeks from Approvals

QTY	ITEM	DESCRIPTION	UNIT PRICE	TOTAL
10	BE-PD-6-AL-2-2-0	6' Pedestal Series Bench with Aluminum Slats and Two Seat Dividers Pearl Light Grey Powder Coat Painted Finish - RAL 9022	\$850	\$8,500
			Subtotal	\$8,500
			Freight	\$525
			Total	\$9,025

This is a quotation on the above products listed and is subject to the conditions noted below. Prices are subject to change after quote expiration date. Payment terms are subject to change per Brasco's Financial Credit Approval Process. Credit card payments are subject to a 3% processing fee. Brasco accepts Visa, Master Card, and American Express. Offloading shipments is the responsibility of the customer. Please note that a forklift with 8' forks is required unless otherwise noted in writing. Shelters are not shipped fully assembled. Assembly and Installation Required. All anchoring hardware is included. Lead time begins after all approvals including drawings, color selections, applicable deposits, etc.
 *Structural Engineering with Stamped Drawings and Structural Calculations are not included in this quotation and are an additional \$1,975, per shelter type, if required.
 *Concrete Pad Design and Analysis, if needed, is an additional \$750. Hard Copies of Calculations, if needed, are an additional \$100 per copy (Lead time for structural calculations is +/- 12-16 weeks from approval of submittal drawing).

Signature of Acceptance* _____ Date _____

Print Name _____ Title _____

**The above prices, specifications and conditions are satisfactory and are hereby accepted. Brasco International, Inc. is authorized to proceed with the supply of products as noted. Brasco International, Inc. is a vendor and not a contractor or subcontractor. Brasco International, Inc. is not subject to any payment retainage or liquidated damages. All Brasco standard terms and conditions of sale apply.*

We Thank You For Your Consideration



AMERICAN MADE. AMERICAN TRUSTED. SINCE 1993.

32400 INDUSTRIAL DRIVE, MADISON HEIGHTS, MI 48071





Brasco International, Inc. ("Brasco") Standard Terms and Conditions of Sale

The Brasco International, Inc. Standard Terms and Conditions of Sale ("Terms and Conditions") are incorporated herein by reference and form part of this agreement. This quotation shall be valid for 30 days unless otherwise withdrawn by Brasco prior to Purchaser accepting. Purchaser's issuance of either a purchase order or an acceptance shall constitute an acceptance of the Brasco Terms and Conditions. Acceptance shall be in writing. Any additional terms or modifications to the Brasco Terms and Conditions proposed by Purchaser, whether in a purchaser order or otherwise, are expressly rejected by Brasco and not part of the agreement between Brasco and Purchaser. The agreement between Brasco and the Purchaser shall be referred to herein and in the Brasco Terms and Conditions as the "Contract". This quote constitutes an offer to sell products and services on terms expressed herein and shall be construed as inviting acceptance from the Purchaser.

Terms of Payment. Notwithstanding anything contained herein, payment shall be due in accordance with the terms of Brasco's Acknowledgment ("Acknowledgment"), which will be generated upon receipt by Brasco of the Purchaser's signature on the Quote or receipt by Brasco of the Purchaser's signature on the Acknowledgment. An invoice will be generated by Brasco pursuant to the terms of payment under the Contract once Brasco has completed the Order, and the due date for the payment of balance due under the Contract shall be on the invoice.

Warranties. Components not manufactured by Brasco shall be covered by their relevant manufacturer's warranty only. Brasco Products must be installed in accordance with Brasco's installation instructions. The workmanship, design and machined components on the Products are warranted to conform to the applicable specifications and to be free from defects in workmanship and materials for the relevant period listed in Fig. 1. Any modifications or aftermarket additions to the original equipment voids all applicable manufacturers' warranties. All warranties begin from the date of delivery (DOD). Brasco will transfer ownership and good title to the Products free and clear of liens and rights of third parties. **THE FOREGOING WARRANTIES ARE EXCLUSIVE AND ARE IN LIEU OF ALL OTHER WARRANTIES OR REPRESENTATIONS, EXPRESS OR IMPLIED, ARISING BY LAW OR CUSTOM, INCLUDING IMPLIED WARRANTIES OF MERCHANTABILITY AND FITNESS FOR A PARTICULAR PURPOSE. ALL IMPLIED WARRANTIES ARE HEREBY EXPRESSLY DISCLAIMED.**

FIG. 1: STANDARD PRODUCT WARRANTIES FROM DATE OF DELIVERY

General Product Workmanship	1 Year
Powder Coat Finish	1 Year
Solar Panels	1 Year Per Manufacturer's Warranty
Solar Lighting Mounting Hardware	1 Year
LED Light Fixture & Engine	1 Year
Wire Harnesses and Connectors	1 Years
Solar Charge Controller	1 Year
Solar Batteries	1 Year

*Sealed lead acid batteries will self-discharge in storage. Batteries should be stored indoors at a recommended 68 degrees Fahrenheit for max. shelf life. Batteries should be installed no later than 3 months from delivery or the battery warranties will be void.

Limited Remedies. Any warranty claims by Purchaser shall be communicated to Brasco in writing. Failure by Purchaser to give written notice of claim within the stated warranty period shall be deemed an absolute and unconditional waiver of Purchaser's warranty claim. Purchaser's sole and exclusive remedy for a valid warranty claim is either repair or replacement of the Products or a full refund of the price paid by Purchaser for the Products (which remedy shall be selected by Brasco). The remedy does not include the cost of installation, removal, dismantling, or reinstallation and is limited to replacement parts. Shipping and handling fees are not included under warranty terms and are the responsibility of the Purchaser. Purchaser will provide Brasco with access to all available warranty data and the Products. Purchaser will also provide Brasco with an opportunity to participate in root cause analysis performed by Purchaser concerning the Products. Brasco shall have no liability to the extent Products are or have been: (a) modified by Purchaser or a third party; (b) modified by Brasco at Purchaser's request; (c) made to specifications not provided by Brasco; (d) used or installed in a way not known to Brasco or operated under conditions not known to Brasco; or (e) subject to misuse, abuse or improper storage, installation or maintenance. Brasco cannot be held responsible for components that become obsolete.

Payment Late Charges, Certain Remedies and Recovery of Expenses. Except as otherwise provided in the Acknowledgment, all payments are due thirty (30) days from the date of Brasco's invoice and shall be paid in United States currency. Purchaser shall pay a charge equal to the lesser of (i) the highest rate allowable by law or (ii) 1.5% per month (18% per annum) of the unpaid balance with respect to any late payments. In addition, Purchaser shall pay all costs and expenses incurred by Brasco, including actual attorney's fees, which were incurred in connection with enforcing the Contract and/or collecting any past due payments. Brasco shall have the right of setoff, the right to terminate the Contract and/or the right to suspend further deliveries under the Contract and/or other agreements with Purchaser, the right to recover damages in addition to any other remedies available to Brasco as a matter of law, in the event Purchaser fails to make any payment when due. Brasco may require full or partial payment in advance of shipment if, in Brasco's opinion, the credit or financial condition of Purchaser is, or is about to become, impaired. If Purchaser requests delayed shipment, Brasco may bill for Products when ready for shipment and charge reasonable daily storage fees. Purchaser shall not have any right of setoff against Brasco. The remedies available to Brasco for Purchaser's breach are intended to be as flexible as permissible and cumulative to the fullest extent permissible and no choice of any one or more remedies is intended to constitute an election of remedies which would limit the ability to assert other remedies.



AMERICAN MADE. AMERICAN TRUSTED. SINCE 1993.

32400 INDUSTRIAL DRIVE, MADISON HEIGHTS, MI 48071





Brasco International, Inc. ("Brasco") Standard Terms and Conditions of Sale

Limitation of Liability:

NOTWITHSTANDING ANYTHING HEREIN TO THE CONTRARY, EXCEPT FOR BREACH OF OBLIGATIONS OF CONFIDENTIALITY OR MISAPPROPRIATION OF INTELLECTUAL PROPERTY, NEITHER PARTY SHALL BE LIABLE TO THE OTHER PARTY OR ANY THIRD PARTY FOR ANY SPECIAL, INCIDENTAL, INDIRECT, CONSEQUENTIAL, PUNITIVE, OR EXEMPLARY DAMAGES OF ANY KIND ARISING FROM OR RELATING TO THE OBLIGATIONS UNDER THIS CONTRACT. THE TERM "CONSEQUENTIAL DAMAGES" SHALL INCLUDE, BUT NOT BE LIMITED TO, LOSS OF ANTICIPATED PROFITS, LOSS OF USE, LOSS OF REVENUE AND COST OF CAPITAL. NEITHER PARTY MAY BRING ANY ACTION, REGARDLESS OF FORM, ARISING OUT OF TRANSACTIONS UNDER THE CONTRACT, MORE THAN TWO (2) YEARS AFTER THE CAUSE OF ACTION HAS ACCRUED. EXCEPT FOR PERSONAL INJURY OR DEATH DUE TO BRASCO'S MISCONDUCT, the parties agree that the total damages that can be awarded in any claim by PURCHASER relating to BRASCO's obligations under this CONTRACT (WHETHER BASED IN CONTRACT, TORT OR OTHERWISE), shall not exceed the combined total of amounts paid by PURCHASER to BRASCO under the CONTRACT. THE PARTIES EXPRESSLY AGREE THAT THE ABOVE LIMITATIONS ON LIABILITY PROVISIONS SHALL REMAIN IN FULL FORCE AND EFFECT EVEN IF IT IS FOUND THAT PURCHASER'S EXCLUSIVE REMEDY FAILS OF ITS ESSENTIAL PURPOSE.

Cancellation. A. Purchaser may cancel an order for "Convenience" via written notice to Brasco within 5 business days from the date of receipt by Brasco of the Purchaser's signature on the Quote or receipt by Brasco of the Purchaser's signature on the Acknowledgment and no cancellation fee shall be due Brasco. Cancellations of orders for reasons other than for Convenience as referred to above must be in writing and agreed to in advance by Brasco. Such cancellations are subject to a cancellation charge equal to the greater of the actual costs incurred by Brasco during the performance period or a 50% cancellation fee.

Shipping and Delivery. Brasco shall not be liable for delays or failure in performance when caused by circumstances beyond Brasco's reasonable control. If Purchaser does not provide shipping and routing instructions, Brasco shall be the sole judge of the best method of routing shipment. All sales of Products are F.O.B. Brasco's plant. Risk of loss of the Products shall transfer to Purchaser upon delivery of the Products to the common carrier.

Modifications and Delays. Brasco reserves the right to modify or change portions of this Contract should any assumptions specified be determined to be incorrect, or if new/additional information relative to this Contract become available. After 90 days, any delays outside of Brasco's control will result in price escalation using the Producer's Price Index, as published by the Bureau of Labor Statistics: Fabricated Structural Metal Products (Series Code WPU107).

Termination by Brasco. In addition to any other rights to terminate the Contract or suspend performance under the Contract, (A) Brasco may, upon written notice to Purchaser immediately terminate all or any part of the Contract or suspend performance under the Contract, without any liability to the Purchaser and without waiving its right to damages, (a) if Purchaser (i) repudiates, breaches, or threatens to breach any of the terms of the Contract, (ii) fails to accept or threatens not to accept Products in accordance with the Contract, (iii) fails to make timely payment, or (b) upon the occurrence or threat of insolvency or bankruptcy of Purchaser; (B) Purchaser shall purchase and pay Brasco immediately for all unique raw materials, work in process and finished goods under the Contract; (C) Purchaser shall reimburse Brasco for all preparation and other expenses incurred by Brasco and/or its subcontractors in connection with the Contract and for all other losses and costs arising from the termination.

Lead Times. Lead time is the window of time necessary to complete an order, after the approvals process is complete. The approvals process includes satisfying Brasco's credit terms and written approval of Brasco's preliminary engineering drawings. Once all approvals are complete, the lead time begins, wherein detailed engineering paperwork is completed, stamped calculations are ordered, material is purchased, and the order is fabricated. For orders that endure a lengthy approvals process, lead times may shift between the time the order was placed and approved. Additionally, third party lead times and availability can directly impact Brasco's lead times, therefore Brasco shall not be liable for any damages (actual or liquidated) caused by acts outside of its control that arise from third party suppliers.

Change Orders. Design, material, finish and quantity changes by the Purchaser to an order after preliminary engineering approval drawings are provided by Brasco are subject to a Change Order fee. Fees include a minimum administrative fee of \$105.00, with relevant material cost and additional labor fees applied.

Purchaser Approvals. In accordance with the terms of this Contract, Purchaser agrees to timely execute and return to Brasco an approval of each set of drawings provided to Purchaser by Brasco including, but not limited to, Preliminary Elevation Drawings and Detailed Engineering Drawings. Failure by the Purchaser to timely execute and return to Brasco an approval of drawings provided by Brasco negatively effects lead time of the order and if same occurs, Brasco in its sole discretion shall have the unilateral right to increase the lead time to complete and deliver the order to the Purchaser or terminate the Contract.

Rejections and Returns. Purchaser will be deemed to have inspected and accepted all delivered Products unless written notice of rejection specifying the basis therefore in reasonable detail, is provided to Brasco within 10 days after delivery. Purchaser may not return Products that are not timely rejected without Brasco's prior written approval.

Taxes. A 6% Sales tax will be billed to Michigan businesses, entities and municipalities as applicable under Michigan State law. If your business is tax exempt, please provide a Sales Tax-Exempt Certificate. Sales tax will not be billed to businesses, entities and municipalities outside the jurisdiction of the State of Michigan and is the sole responsibility of said entity to pay within its respective jurisdiction where applicable.

Governing Law, Jurisdiction and Venue. The Contract shall be governed by and construed in accordance with the laws of the State of Michigan without reference to the choice of law principles thereof. Each party irrevocably submits to the jurisdiction of the Courts of the State of Michigan and the United States District Court for the Eastern District of Michigan and hereby waives, to the fullest extent it may effectively do so, the defense of an inconvenient forum to the maintenance of such action or proceeding.

Severability. If any provision of this Agreement is or becomes illegal, void or invalid, that shall not affect the legality and validity of the other provisions.



AMERICAN MADE. AMERICAN TRUSTED. SINCE 1993.

32400 INDUSTRIAL DRIVE, MADISON HEIGHTS, MI 48071



Eifling, Dane

From: Adam Waddell <ewaddel@uark.edu>
Sent: Thursday, September 18, 2025 9:55 AM
To: Eifling, Dane
Subject: Transit Shelters
Attachments: Bus Stop Shop Drawing approval.pdf

CAUTION: This email originated from outside of the City of Fayetteville. Do not click links or open attachments unless you recognize the sender and know the content is safe.

Dane,

I have attached the cut sheet for the Brasco shelters that we use. These are the only pre-fabricated shelter that we have installed for 10 plus years. These are also being incorporated into our formal A/E guide for campus standards. Due the limited resources that we have and the maintenance agreement for City installed shelters it is vital that the shelters are uniform throughout the system.

Thank You,

E. Adam Waddell
Director
Razorback Transit

Office: 479-575-6292

Transit and Parking | 116 BUSB
University of Arkansas | Fayetteville, AR 72701

ewaddel@uark.edu



Eifling, Dane

From: Joel Gardner <jgardner@ozark.org>
Sent: Tuesday, September 16, 2025 11:41 AM
To: Eifling, Dane; ewaddel@uark.edu
Cc: Stephen Polumbo
Subject: RE: Brasco Int'l

CAUTION: This email originated from outside of the City of Fayetteville. Do not click links or open attachments unless you recognize the sender and know the content is safe.

ORT does not state a standard, however, to maintain consistence in our shelter looks, parts replacement and familiarity for installation, we continue to procure Brasco shelters. The model ORT procures is the Slimline Series Aluminum Structure that is 5x10, full rear and sidewalls painted ivy green with the standing seam aluminum hip roof.

Joel Gardner
Executive Director
P 479-361-8742
E jgardner@ozark.org

Ozark Regional Transit Authority
2423 E. Robinson Avenue
Springdale, AR 72764
ozark.org

From: Eifling, Dane <deifling@fayetteville-ar.gov>
Sent: Tuesday, September 16, 2025 10:14 AM
To: ewaddel@uark.edu; Joel Gardner <jgardner@ozark.org>
Cc: Stephen Polumbo <polumbo@uark.edu>
Subject: FW: Brasco Int'l

Joel, Adam,

Can you please provide any substantiating documents such as standard from bus stops that say Brasco materials are the standard for Razorback and ORT?

If you don't have an existing document just a letter or an email saying that your agencies use Brasco shelters for uniformity and standardization for maintenance and repair purposes may be enough.

I hate to rush you but this will need to be **submitted by tomorrow** in order to make the next council meeting.

Dane Eifling
Mobility Coordinator
City of Fayetteville, AR
Phone 479.575.8243



From: Pennington, Blake <bpennington@fayetteville-ar.gov>
Sent: Monday, September 15, 2025 4:18 PM
To: Eifling, Dane <deifling@fayetteville-ar.gov>; Combs, Sara <scombs@fayetteville-ar.gov>
Subject: Brasco Int'l

Dane and Sara,

We're trying to get ahead on upcoming agenda items and I'm working on the resolution for the Brasco Int'l transit stop improvements. The memo says: Staff has requested to waive competitive bidding for this purchase as **both transit agencies require Brasco International per their standards for all shelters and seating**. Ozark Regional and Razorback Transit are responsible for maintenance of all bus shelters and benches once installed.

Where does this information come from? In order to waive competitive bidding we have to establish that it's not feasible or practical to bid and I need some kind of backup for a statement like this.

Thanks,

Blake E. Pennington
Senior Assistant City Attorney
City of Fayetteville, Arkansas
bpennington@fayetteville-ar.gov
Direct: 479.575.8312
www.fayetteville-ar.gov





MEETING OF MARCH 31, 2026

TO: Mayor Rawn and City Council

THROUGH: Justin Bland, City Engineer
Chris Brown, Public Works Director
Keith Macedo, Chief of Staff

FROM: Matt Mihalevich, Active Transportation Manager

SUBJECT: **Crafton Tull & ARDOT Agreement - MLK Pedestrian Improvements**

RECOMMENDATION:

Staff recommends approval of a contract in the amount of \$114,376.00 with Crafton, Tull & Associates, Inc. per RFQ 26-01, selection #3 to provide professional services for the design of the MLK Pedestrian Improvements project in concurrence with the on-call selection Task Order No 060 by the Arkansas Department of Transportation and approval of a Master Agreement Addendum with the Arkansas Department of Transportation.

BACKGROUND:

In 2025, the City of Fayetteville was awarded \$500,000 through the Arkansas Department of Transportation's Transportation Alternatives Program. On May 29, 2025, Resolution 127-25 was approved to authorize an agreement of understanding with the Arkansas Department of Transportation for the M.L.K. Pedestrian Improvements Project. The grant amount includes funding for engineering design fees. Crafton Tull, listed on the Arkansas Department of Transportation's on-call selection list, was also selected through RFQ 25-01, Selection 3, by Fayetteville's selection committee to provide professional design services for the sidewalk project.

The Arkansas Department of Transportation has partnered with Crafton, Tull & Associates, Inc. to prepare the detailed scope of work described in Task Order 060 through their on-call services. The master agreement addendum establishes a tri-party arrangement for engineering design services among Crafton, Tull & Associates, the City of Fayetteville, and the Arkansas Department of Transportation, enabling the awarded grant funding to be applied toward the engineering fees.

DISCUSSION:

The M.L.K. Walkability Project will focus on connecting sidewalks along a half-mile section of the south side of M.L.K. Boulevard between Wood Avenue and Church Avenue. In addition to sidewalks, the project includes plans for an enhanced crosswalk at M.L.K. and Willow Avenue, as well as improvements to an Ozark Regional Transit stop at that intersection. This project was originally identified in Fayetteville's 2018 Mobility Plan through mapping analysis and a high volume of requests for pedestrian improvements in this area. It will advance Fayetteville's active transportation goals by providing safe and accessible infrastructure, encouraging more people to choose alternative modes of transportation.

BUDGET/STAFF IMPACT:

Mailing address:

113 W. Mountain Street
Fayetteville, AR 72701

www.fayetteville-ar.gov

Funding for the engineering design will be provided with 80% from the Transportation Alternatives Program (TAP) Grant and 20% from local matching funds.

ATTACHMENTS: 3. Staff Review Form, 4. RFQ 26-01, Selection 3 - Final Vote, 5. MLK Ped. Improvements Concept - Church to Wood, 6. On-Call-LP-Addendum-CTA-City-of-Fayetteville - Signed by CTA, 7. CTA Proposal Task Order 060 - Signed by CTA

Mailing address:

113 W. Mountain Street
Fayetteville, AR 72701

www.fayetteville-ar.gov



City of Fayetteville, Arkansas

113 West Mountain Street
Fayetteville, AR 72701
(479) 575-8323

Legislation Text

File #: 2026-1130

A RESOLUTION TO AWARD RFQ #26-01 AND AUTHORIZE A PROFESSIONAL ENGINEERING SERVICES CONTRACT WITH CRAFTON, TULL & ASSOCIATES, INC. IN THE AMOUNT OF \$114,376.00 FOR THE DESIGN OF THE MARTIN LUTHER KING, JR BOULEVARD PEDESTRIAN IMPROVEMENTS PROJECT, AND TO APPROVE A MASTER AGREEMENT ADDENDUM WITH THE ARKANSAS DEPARTMENT OF TRANSPORTATION

WHEREAS, in 2025, the City was awarded \$500,000.00 through the Arkansas Department of Transportation's Transportation Alternatives Program for the Martin Luther King, Jr. Boulevard Pedestrian Improvements Project; and

WHEREAS, on May 29, 2025, the City Council passed Resolution 127-25 authorizing an agreement of understanding with the Arkansas Department of Transportation for the Project which will focus on connecting sidewalks along a half-mile section of the south side of Martin Luther King, Jr. Boulevard, and

WHEREAS, the Arkansas Department of Transportation has partnered with Crafton, Tull & Associates, Inc. to prepare a detailed scope of work and a master agreement addendum will establish a tri-party arrangement for engineering design services among Crafton, Tull & Associates, the City of Fayetteville, and the Arkansas Department of Transportation, enabling the awarded grant funding to be applied toward the engineering fees.

NOW, THEREFORE, BE IT RESOLVED BY THE CITY COUNCIL OF THE CITY OF FAYETTEVILLE, ARKANSAS:

Section 1: That the City Council of the City of Fayetteville, Arkansas hereby awards RFQ #26-01, and authorizes Mayor Rawn to sign a professional engineering services contract with Crafton, Tull & Associates, Inc. in the amount of \$114,376.00 for the design of the Martin Luther King, Jr. Pedestrian Improvements Project.

Section 2: That the City Council of the City of Fayetteville, Arkansas hereby authorizes Mayor Rawn to sign the master agreement addendum with the Arkansas Department of Transportation.

City of Fayetteville Staff Review Form

2026-822

Item ID

4/7/2026

City Council Meeting Date - Agenda Item Only
N/A for Non-Agenda Item

Matt Mihalevich

3/12/2026

ENGINEERING (621)

Submitted By

Submitted Date

Division / Department

Action Recommendation:

Staff recommends approval of a contract in the amount of \$114,376.00 with Crafton, Tull & Associates, Inc. per RFQ 26-01, selection #3 to provide professional services for the design of the MLK Pedestrian Improvements project in concurrence with the on-call selection task order No 060 by the Arkansas Department of Transportation and approval of a master agreement addendum with the Arkansas Department of Transportation.

Budget Impact:

4601.860.7216-5860.02

Bond Program Grant Matching

4802.860.7216-5860.02

Street Projects 2024 Bonds

Account Number

Fund

46020.7216.2000

Street Project Bonds - MLK Walkability Impr,
Wood Ave to Church Ave

Project Number

Project Title

Budgeted Item? Yes

Total Amended Budget

\$ 500,000.00

Expenses (Actual+Encum)

\$ 1,000.00

Available Budget

\$ 499,000.00

Does item have a direct cost? Yes

Item Cost

\$ 114,376.00

Is a Budget Amendment attached? No

Budget Amendment

\$ -

Remaining Budget

\$ 384,624.00

Purchase Order Number: _____

Previous Ordinance or Resolution # 127-25

Change Order Number: _____

Approval Date: 5/20/2025

Original Contract Number: _____

Comments:



CITY OF
FAYETTEVILLE
 ARKANSAS

SELECTION COMMITTEE - VOTING RESULTS

Selection Description: RFQ 26-01, Selection 3 - MLK Pedestrian Improvements

Selection Committee Date/Time: 2/25/2026 at 11:00 AM via Zoom

Firms are listed in alphabetical order			
Overall RANK	1	2	3
	Crafton Tull & Associates, Inc	I & S Group, Inc	Kimley-Horn and Associates, Inc
1st			
2nd			
3rd			

OVERALL RANK SUMMARY SCORING

1st ranked firm: CRAFTON TULL & ASSOCIATES, INC
 2nd ranked firm: I & S GROUP, INC
 3rd ranked firm: KIMLEY-HORN AND ASSOCIATES, INC

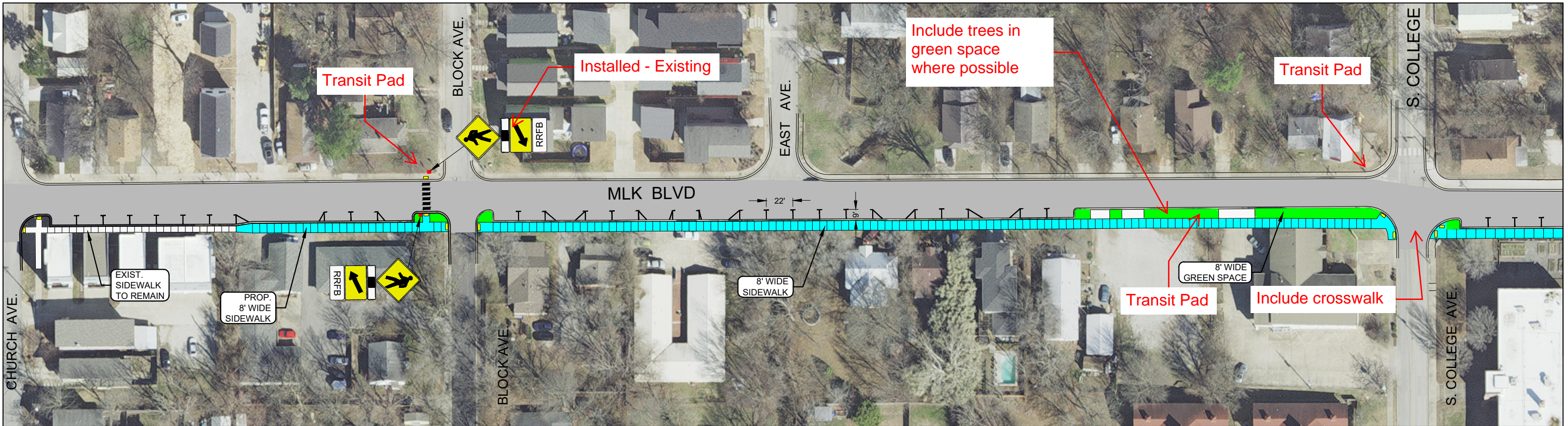
Tallied by:

K Fitch
 Kenny Fitch, Sr. Procurement Agent

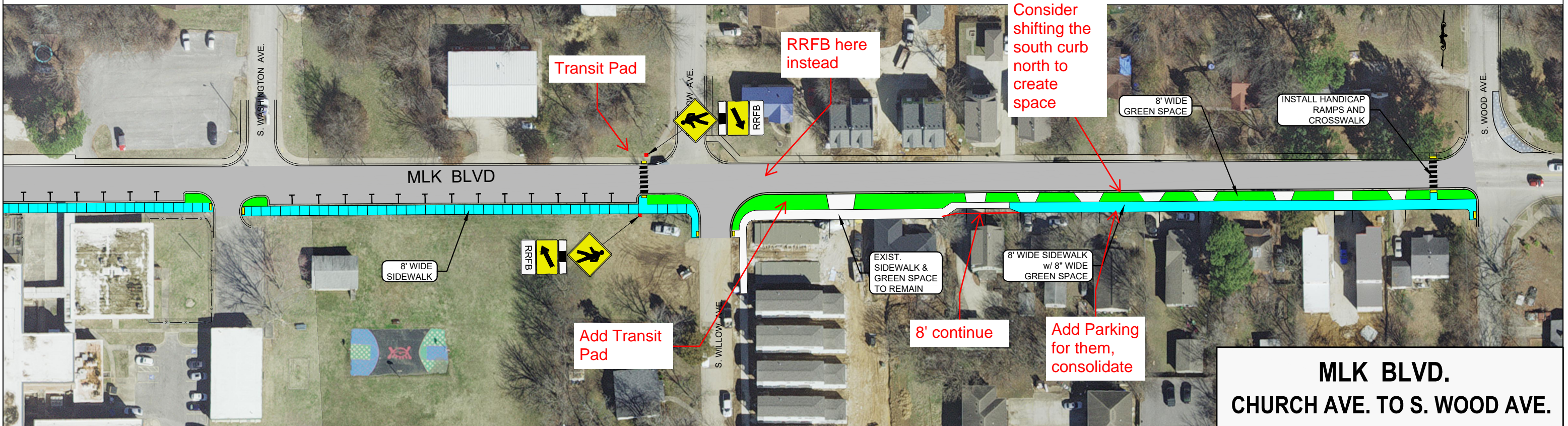
Date: 02 / 27 / 26

Trevel Young
 Trevel Young, Procurement Agent

Date: 2 / 27 / 26



Scale: 1" = 40'



Scale: 1" = 40'

**MLK BLVD.
CHURCH AVE. TO S. WOOD AVE.**



MASTER AGREEMENT ADDENDUM

ON-CALL SERVICES LOCAL FEDERAL AID PROJECTS (2025-2028) CRAFTON, TULL & ASSOCIATES, INC. INCORPORATION OF PROJECT SPONSOR

1. INCORPORATION OF SPONSOR

- 1.1. This Addendum is made and entered into as an addition to the Agreement dated February 18, 2025, between the Arkansas Department of Transportation (ARDOT) and Crafton, Tull & Associates, Inc., "Consultant", (hereinafter referred to as the "Agreement"). The purpose of this Addendum is to incorporate the City of Fayetteville as the "Sponsor", into the Agreement, ensuring all provisions, terms, and conditions of the Agreement are binding and applicable to the local agency.
- 1.2. The Sponsor is hereby added as a party to the Agreement and shall have all the rights, obligations, and responsibilities outlined in the original Agreement, as applicable. The Consultant agrees to provide services to the Sponsor as outlined in the Agreement, subject to all terms and conditions.

2. RESPONSIBILITIES

- 2.1. ARDOT will retain oversight and management authority to ensure compliance with applicable state and federal regulations. The Sponsor assumes responsibility for approving deliverables and milestones specific to the Sponsor's projects and coordinating directly with the Consultant for day-to-day project management and decisions.
- 2.2. The Consultant's compensation for services rendered to the Sponsor shall be paid in accordance with the terms outlined in the Agreement. Payments for Sponsor-specific projects shall be made from Sponsor funds, subject to any ARDOT oversight or approval requirements as stipulated in the Agreement and reimbursed upon proof of payment for service and demonstrated adherence to Federal Acquisitions Regulation (FAR) Cost Principles.
- 2.3. The Sponsor shall be included alongside ARDOT in any provisions regarding indemnification, liability, or insurance requirements as outlined in the Agreement.
- 2.4. The Consultant shall comply with all federal, state, and local laws, regulations, and policies applicable to services performed for the Sponsor under this Agreement, as required for ARDOT administered agreements.

- 2.5. The Consultant shall maintain records for Sponsor-specific projects in accordance with the Agreement's requirements for audit and financial review. ARDOT retains the authority to review and audit records for Sponsor-administered projects to ensure compliance with applicable state and federal requirements.
- 2.6. This Addendum may be modified or terminated only by mutual written agreement of ARDOT, the Sponsor, and the Consultant. Termination of the Agreement or this Addendum does not relieve the Consultant of obligations related to prior services performed for the Sponsor.
- 2.7. All terms, conditions, and provisions of the original Agreement are hereby incorporated by reference into this Addendum and made applicable to the Sponsor, unless expressly modified herein.

3. CERTIFICATION OF SPONSOR

- 3.1. The Mayor of the City of Fayetteville certifies that neither the aforementioned consulting firm nor its representative has not been required, either directly or indirectly, as a condition for obtaining or executing this contract, to:
 - 3.1.1. Employ or retain any firm or person, or agree to do so.
 - 3.1.2. Pay or agree to pay any fees, contributions, donations, or any other form of consideration to any firm, person, or organization.
 - 3.1.3. Except as expressly stated herein (if applicable).

4. NOTICE

Arkansas Department of Transportation
10324 Interstate 30
Post Office Box 2261
Little Rock, AR 72203
ConsultantContracts@ARDOT.gov


Crafton, Tull & Associates, Inc.
Michael Burns
901 N. 47th Street, Suite 400
Rogers, AR 72756
mike.burns@craftontull.com

City of Fayetteville
Molly Rawn, Mayor
113 W. Mountain Street
Fayetteville, AR 72701
Mayor@fayetteville-ar.gov

IN WITNESS WHEREOF, the parties execute this Agreement, to be effective upon the date set out above.

CRAFTON, TULL & ASSOCIATES, INC.

ARKANSAS STATE HIGHWAY COMMISSION

BY: 
Michael Burns
Executive Vice President

BY: _____
Jared D. Wiley, P.E.
Director

CITY OF FAYETTEVILLE

BY: _____
Molly Rawn
Mayor

Disclaimer: This contract is being electronically signed. The DocExpress Document Signing History will be located on the final page of the executed contract. This document will have all dates and electronic signatures applicable to the execution of this contract.

**ON-CALL SERVICES
LOCAL FEDERAL AID PROJECTS (2025-2028)**

**TASK ORDER NO. 060
JOB NO. 040993, FAYETTEVILLE M.L.K. PED. IMPVTS. (TAP-24) (S)**

Date: (See DocExpress Document Signing History)

WHEREAS, the Arkansas State Highway Commission (“Commission”) and **Crafton, Tull & Associates, Inc.** (“Consultant”) entered into a Master Agreement for Engineering Services dated **February 18, 2025**; and

WHEREAS, the Master Agreement contemplates the issuance of Task Order Agreements involving the Commission, the Consultant, and a project sponsor (“Sponsor”); and

WHEREAS, the Sponsor, **City of Fayetteville**, has agreed to the terms and conditions of the Master Agreement through execution of the **Addendum**; and

WHEREAS, the services to be provided under this Task Order consist of **Title I** services, with additional phases to be authorized by amendment as appropriate and as determined by mutual agreement;

NOW, THEREFORE, the parties agree as follows:

1. CONTRACT TYPE

1.1. This Task Order shall be a **Cost-Plus-Fixed-Fee Agreement**, in accordance with the terms of the Master Agreement.

2. CEILING PRICES

2.1. The Total Ceiling Price for this Task Order is **\$114,376**.

2.2. The Title I Ceiling Price is **\$114,376**.

2.3. The Title II Ceiling Price is **Not Applicable**.

2.4. The Fixed Fee is **\$12,192**.

3. INDIRECT COST RATE

3.1. The most recently accepted indirect cost rate at the time of execution is for **FY2024**.

3.2. The applicable indirect cost rate is **149.65%**.

3.3. The applicable Facilities Capital Cost of Money (FCCM) is **1.43%**.

4. ATTACHMENTS

4.1. Attachment A – Scope of Work

4.2. Attachment B – Justification of Costs and Fees

4.3. Attachment C – Master Rates

4.4. Attachment D – Project Schedule



5. COMPLETION DATE

- 5.1. The 30% design plans shall be submitted no later than **March 1, 2026**.
- 5.2. The 60% design plans shall be submitted no later than **May 1, 2026**.
- 5.3. The 90% design plans shall be submitted no later than **August 1, 2026**.
- 5.4. The 100% design plans shall be submitted no later than **October 1, 2026**.
- 5.5. The anticipated completion date for Title I Services is **December 31, 2026**.


6. CORRESPONDENCE

- 6.1. The Sponsor, Local Programs Division, and Consultant Contracts Division shall be copied on this task order and all related correspondence.
- 6.2. The Sponsor's designated representative for this Task Order is **Dane Eifling**.
- 6.3. Invoices shall be submitted to the following:
ARDOT: LPA@ardot.gov
Sponsor: via Dane Eifling at deifling@fayetteville-ar.gov

7. EXECUTION

IN WITNESS WHEREOF, the parties execute this Task Order, to be effective upon the Date Set Out in [DocExpress](#).

CRAFTON, TULL & ASSOCIATES, INC.

By: 
Michael Burns
Executive Vice President

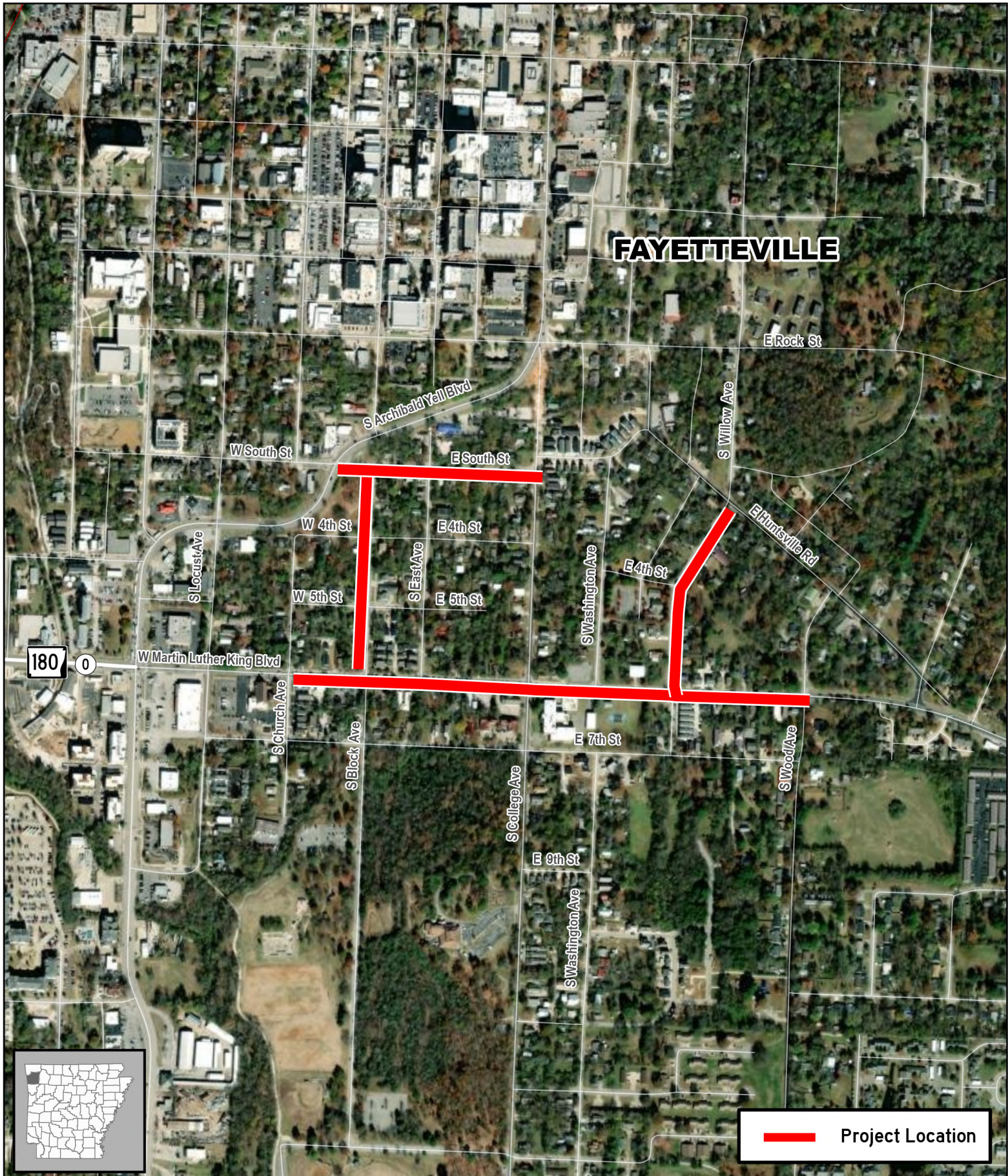
ARKANSAS STATE HIGHWAY COMMISSION


By: _____
Jared D. Wiley, P.E.
Director

CITY OF FAYETTEVILLE

By: _____
Molly Rawn
Mayor

Disclaimer: This contract is signed in [DocExpress](#). The Signing History with all dates and electronic signatures applicable to the execution of this Task Order is located on the final page of the executed contract.



 Project Location

Job 040993

Fayetteville M.L.K. Ped. Impvts. (TAP-24) (S)

Washington County





ON-CALL SERVICES

LOCAL FEDERAL AID PROJECTS (2025-2028)

TASK ORDER NO. 060

JOB NO. 040993, FAYETTEVILLE M.L.K. PED. IMPVTS. (TAP-24) (S)

SCOPE OF WORK

DESCRIPTION OF THE PROJECT

The City of Fayetteville is proposing to engage a design firm or a team of design firms to provide professional engineering services for Job No. 040993: Fayetteville M.L.K. Ped. Impvts.

The M.L.K. Walkability Improvements project includes enhancements along Martin Luther King, Jr. Boulevard. These improvements consist of the addition of an 8-foot-wide shared-use paved side path with greenspace separation on the south side of the street along an approximately half-mile section from Church Avenue to Wood Avenue. This section will include extending an existing box culvert around the intersection of M.L.K. and East Avenue. Improvements also include modifications to and/or relocation of 2-4 existing transit stops, as well as a Rectangular Rapid Flashing Beacon (RRFB) enhanced crosswalk with associated curb and ADA ramp improvements across M.L.K. at Willow Avenue on the east side of the intersection.

The plans will not be required to be prepared in standard ARDOT format.

SERVICES PROVIDED BY THE SPONSOR

1. SURVEYS

- 1.1. Provide Available Parcel Surveys
- 1.2. Provide Design Survey
- 1.3. Provide Available Topographic Surveys of the Area

2. ENVIRONMENTAL

- 2.1. Publish and Pay for Public Notices and Legal Notices

3. DESIGN

- 3.1. Provide Existing Construction Plans
- 3.2. Provide Project Goals
- 3.3. Review and Approve of All Design Plans

4. RIGHT-OF-WAY

- 4.1. Provide Existing Right-of-Way Plans (if available)



SERVICES PROVIDED BY ARDOT

5. ENVIRONMENTAL

- 5.1. Provide Environmental Constraints
- 5.2. Provide final Categorical Exclusion (CE) document
- 5.3. Provide guidance regarding public meetings to comply with federal requirements
- 5.4. Coordinate with State Historic Preservation Office (SHPO) and other agencies as necessary

6. DESIGN

- 6.1. Review and Approve of All Design Plans

7. RIGHT-OF-WAY

- 7.1. Provide Existing Right-of-Way Plans (if available)

8. UTILITIES

- 8.1. Review and Approve Utility Plans

TITLE I SERVICES TO BE FURNISHED BY THE CONSULTANT

Submit an updated cost estimate with each design review, including costs for utilities, etc. as applicable. The scope of work for engineering services will generally consist of providing the following tasks:

9. CONCEPTUAL DESIGN (30% SUBMITTAL)

- 9.1. Submit design criteria to be used in the design of the project for approval by the Sponsor and ARDOT prior to beginning conceptual design work.
- 9.2. Submit 30% plans for review by the Sponsor and ARDOT to include at a minimum: the proposed alignment with horizontal curve data, grades with vertical curve data, limits of construction, existing property lines and right of way, floodway and floodplain limits, and existing aerial photography and/or topographic survey.
- 9.3. Identify utility conflicts associated with proposed alignment.
- 9.4. Any existing curb ramp that must be rebuilt in the project is to be compliant with the Americans with Disabilities Act (ADA) requirements.
- 9.5. Any new curb ramp included in this project is to be compliant with ADA requirements.

10. PRELIMINARY DESIGN (60% SUBMITTAL)

- 10.1. Provide concrete mix design and strength specifications for proposed project if ARDOT Standard Specifications are not used.
- 10.2. Include any drainage design necessary to meet design requirements and standards.

- 10.3. Preliminary plans shall be submitted at the 60% level for Sponsor and ARDOT approval of the geometric design, title sheet, and typical sections.

REQUIREMENTS FOR PRELIMINARY PLANS (60% SUBMITTAL)

- 10.4. The Title Sheet.
- 10.5. The typical sections will include notes pertaining to slopes, tolerances, leveling, and other items. The typical sections will contain information depicting the width of the subgrade, sidewalk, and clear zones. The point of profile will be defined and the location of any pipes or utilities if needed will be illustrated. The location and shape for all ditches will also be depicted.
- 10.6. Project specific details required to properly construct elements of the job that are not covered in the standard drawings or other plan drawings will be developed as needed.
- 10.7. Control detail sheets of the survey baseline and design centerline with control point data.
- 10.8. **PLAN & PROFILE SHEETS:** The plan and profile sheets will contain information including the following in the plan view: proposed centerline, existing topography, existing utilities, horizontal geometry (curve data, PI's, bearings), north arrow, sidewalk dimension, proposed driveways and side streets, proposed cross drains and related construction notes, guardrail locations, turning radii, limits of existing and proposed right-of-way and control of access (including fence), permanent and temporary construction easements, construction limits, location of right-of-way points and benchmarks, floodplain limits, and other data as required; profile view: proposed vertical geometry (including VPI's, grades, and ditch grades), existing ground profile, and drainage information.
- 10.9. Erosion control plans.
- 10.10. Make revisions necessary to respond to comments made at the 30% review.
- 10.11. Provide design information necessary for environmental documentation and environmental permits to be obtained by ARDOT.

11. FINAL DESIGN (90/100% SUBMITTAL)

- 11.1. The objective of this phase is to complete plans for the project. In the final design phase, comments from the 60% submittal will be addressed, all quantities will be calculated, plans developed, and a construction cost estimate calculated. The 90% plans review will be performed, and comments will be incorporated into the final plans. The final design of the project will proceed with the written approval by the Sponsor and ARDOT.
- 11.2. Comments from the review of 60% plans will be incorporated in 90% plans and all sheets will be updated with appropriate quantity callouts once quantities are tabulated.
- 11.3. Survey control sheets will show the horizontal and vertical control points and horizontal alignment data in plan view at the appropriate scale. The following information will be provided: Traverse Point Table-Point number, northing, easting, and elevation (if applicable), horizontal alignment data-curve number, point type (PC/PI/PT), station, northing, and easting. The appropriate notes will also be included.
-



- 11.4. Erosion control plans will be developed and will include temporary measures that will be put in place at the start of construction. The information for temporary measures includes the location of silt fences (station/offset at PI's), rock berms, sediment basins, as well as other strategies to prevent pollution of streams by stormwater runoff from the project site. Permanent erosion control measures that will be left in place after construction is complete will also be noted.
- 11.5. Cross sections will be shown at a 1:1 scale. In addition, any matchlines will be labeled and sections will be provided at any pipes/culverts perpendicular to centerline construction.
- 11.6. Plan and profile sheets related to the relocation of existing water and sewer facilities which are directly affected by the project.
- 11.7. Quantities will be calculated and tabulated using the 2014 Standard Specifications for Highway Construction and the appropriate supplemental and job specific special provisions and ARDOT's "Roadway Design Plan Development Guidelines" and "Roadway Design Training Guide".
- 11.8. Provide special provisions.
- 11.9. Provide construction cost estimate.
- 11.10. Provide one electronic pdf, MicroStation (if requested by ARDOT), and AutoCad/Civil 3D files of plans for right of way review, and 90% plan review.
- 11.11. Make plan changes resulting from the 90% review, subsequent reviews, and final field inspection.
- 11.12. Perform all other work required to advertise and receive bids.

12. PROJECT CONDITIONS OF THE WORK:

- 12.1. Consultant fee estimate must be agreed upon by all parties.
 - 12.2. The facility shall be designed in accordance with the Sponsor's Master Street Plan (if applicable), latest edition of AASHTO, "A Policy on Geometric Design of Highways and Streets"; the latest edition of NACTO, "Urban Bikeway Design Guide"; and ARDOT policies, current AREMA publications as appropriate and policies. Other appropriate AASHTO publications and guide specifications shall also be utilized. Upon completion of the contract, the Consultant shall furnish to the Sponsor all electronic files of the project design and plans, Adobe Acrobat PDF file format & AutoCad/Civil 3D file format.
 - 12.3. All plans and surveys shall be in U.S. Foot Units and based on Arkansas State Plane Grid, localized in the existing Sponsor's Control Network, with ties to ARDOT control points.
 - 12.4. In addition, all design surveys and/or land surveys required and agreed upon by the ARDOT, shall be performed to Arkansas minimum standards. All survey work shall be supervised and certified (stamped) by a Professional Land Surveyor registered in Arkansas.
-



-
- 12.5. Construction specifications shall be the current edition of the Sponsor's Standard Specifications, supplemented by the 2014 Arkansas Department of Transportation Specifications for Highway Construction.
 - 12.6. Coordinate design and construction with franchise utility companies' relocations and/or new locations to assure adequate space for all facilities and timely relocations.
 - 12.7. Provide right of way acquisition documents and engineering services required for acquisition of rights of way and easements, as needed.
- 13. TASK ORDER COORDINATION**
- 13.1. Coordination meetings will be conducted on an as needed basis. These meetings shall include the Consultant, the Sponsor, ARDOT and others, as appropriate. The Consultant shall schedule these meetings with the Sponsor and ARDOT concurrence, and compile and distribute meeting minutes, as required.

TITLE I DELIVERABLES:

- 14. DESIGN (10%)**
 - 14.1. Map(s) for Design
 - 14.2. Cost Estimates
 - 14.3. Design Criteria
- 15. CONCEPTUAL DESIGN PHASE (30%)**
 - 15.1. 30% Complete Plans
- 16. PRELIMINARY DESIGN PHASE (60%)**
 - 16.1. 60% Complete Plans
 - 16.2. Meeting Minutes from Coordination Meetings
- 17. FINAL DESIGN PHASE (90/100%)**
 - 17.1. 90% Complete Design Plans
 - 17.2. Final Design Plans signed and sealed by an Arkansas Registered Professional Engineer
 - 17.3. Provide Special Provisions and complete Project Manual for bidding
 - 17.4. Provide construction cost estimate
 - 17.5. Meeting Minutes from Coordination Meetings



- 17.6.** Electronic files of the project design and plans in AutoCad/Civil 3D format that is fully indexed (all reference files attached and set to load automatically.) This includes the electronic copies of project submittals, electronic files of the Project Manual, Special Provisions, design calculations, drainage report, geotechnical report, cost estimates, etc. in Adobe Acrobat PDF format and in Word and Excel format (if applicable).

Attachment B - Justification of Costs and Fees
 December 22, 2025
 Job No. 040993: Fayetteville M.L.K. Ped. Impvts. (TAP-24) (S)
 Task Order No. 060
 PROJECT SUMMARY

TITLE I SERVICES	HOURS	SALARY	FIXED FEE	EXPENSES	TOTAL
PROJECT MANAGEMENT	52	\$8,669	\$1,034	\$0	\$9,703
ROADWAY DESIGN & PLANS	760	\$93,515	\$11,158	\$0	\$104,673
SUBTOTAL TITLE I	812	\$102,184	\$12,192	\$0	\$114,376
TOTAL TITLE I	812	\$102,184	\$12,192	\$0	\$114,376
TOTAL PROJECT	812	\$102,184	\$12,192	\$0	\$114,376

Attachment B - Justification of Costs and Fees
 December 22, 2025
 Job No. 040993: Fayetteville M.L.K. Ped. Impvts. (TAP-24) (S)
 Task Order No. 060

PROJECT MANAGEMENT

MANHOURS								
TASK	ADMIN IV	ENGR CAD TECH II	PROJ. ENGR.	SR ENGR. MNGR.	CAT5	CAT6	CAT7	TOTAL
General								
Item 1 - Project Kickoff Meeting			2	2				4
Item 2 - 30/60/90/Final Coordination				24				24
Item 3 - Monthly Billings	10			10				20
Item 4 - Project Closeout				4				4
TOTAL MH - PROJECT MANAGEMENT	10	0	2	40	0	0	0	52
LABOR COSTS								
Category - Description						Rate	MH	Amount
Administrative IV						\$30.08	10	\$301
Engineering CAD Tech II						\$29.82	0	\$0
Project Engineer						\$48.64	2	\$97
Sr. Engineering Manager						\$76.38	40	\$3,055
							Subtotal	\$3,453
						Overhead	149.65%	\$5,167
							Subtotal	\$8,620
							Fixed Fee	\$1,034
						FCCM	1.43%	\$49
							Subtotal Labor Costs	\$9,703
EXPENSES								
ITEM	Quantity	Unit	Rate	Amount				
Printing (8 1/2 x 11 B&W)		each	\$0.00	\$0.00				
Printing (11 x 17 B&W)		each	\$0.00	\$0.00				
Printing (8 1/2 x 11 color)		each	\$0.00	\$0.00				
Printing (11 x 17 Color)		each	\$0.00	\$0.00				
Mileage (provide a basis for the estimate)		miles	\$0.700	\$0.00				
Lodging - statewide (x nights / x persons)		night	\$132.00	\$0.00				
Meals - 1st day & last day travel Statewide Lunch/Dinner (# persons)		day	\$51.00	\$0.00				
Meals - Statewide B/L/D (# days x # persons)		day	\$68.00	\$0.00				
(Other direct expenses - detail here and the billing units)		each	\$0.00	\$0.00				
							Subtotal Expenses	\$0.00
							Subtotal Expenses (rounded)	\$0
							TOTAL COSTS - PROJECT MANAGEMENT	\$9,703

Attachment B - Justification of Costs and Fees
 December 22, 2025
 Job No. 040993: Fayetteville M.L.K. Ped. Impvts. (TAP-24) (S)
 Task Order No. 060

ROADWAY DESIGN & PLANS

MANHOURS								
TASK	ADMIN IV	ENGR CAD TECH II	PROJ. ENGR.	SR ENGR. MNGR.	CAT5	CAT6	CAT7	TOTAL
Preliminary Layout		8	4					12
30% Design Phase								
Define Design Criteria			4	4				8
30% Plans - Title, Typical, P&Ps		40	20	8				68
Submit 30% Plans				4				4
60% Design Phase								
Corrections per 30% Comments		16		4				20
Drainage Design			20	4				24
Hydraulic Analysis			20	8				28
Utility Coordination			24	8				32
60% Plans - 30% + Drainage/Grading + Erosion + Details		80	40	40				160
60% Estimate		4	4					8
Submit 60% Plans				4				4
90% Design Phase								
Corrections per 60% Comments		20	8	4				32
90% Plans - Full set		80	40	40				160
Special Provisions			20	8				28
Floodplain Development Permit (No-Rise)			40	16				56
90% Construction Cost Estimate/Quantities		8	8	8				24
Submit 90% Plans				8				8
100% Design Phase								
Corrections per 90% Plans		24	24	20				68
Final Construction Cost Estimate			4	4				8
Submit 100% Plans + Authorization to Advertise				8				8
TOTAL MH - ROADWAY DESIGN & PLANS	0	280	280	200	0	0	0	760

Attachment B - Justification of Costs and Fees
 December 22, 2025
 Job No. 040993: Fayetteville M.L.K. Ped. Impvts. (TAP-24) (S)
 Task Order No. 060

ROADWAY DESIGN & PLANS

MANHOURS									
TASK	ADMIN IV	ENGR CAD TECH II	PROJ. ENGR.	SR ENGR. MNGR.	CAT5	CAT6	CAT7	TOTAL	
LABOR COSTS									
Category - Description						Rate	MH	Amount	
Administrative IV						\$30.08	0	\$0	
Engineering CAD Tech II						\$29.82	280	\$8,350	
Project Engineer						\$48.64	280	\$13,619	
Sr. Engineering Manager						\$76.38	200	\$15,276	
							Subtotal	\$37,245	
						Overhead	149.65%	\$55,737	
							Subtotal	\$92,982	
							Fixed Fee	\$11,158	
						FCCM	1.43%	\$533	
							Subtotal Labor Costs	\$104,673	
EXPENSES									
ITEM					Quantity	Unit	Rate	Amount	
Printing (8 1/2 x 11 B&W)						each	\$0.00	\$0.00	
Printing (11 x 17 B&W)						each	\$0.00	\$0.00	
Printing (8 1/2 x 11 color)						each	\$0.00	\$0.00	
Printing (11 x 17 Color)						each	\$0.00	\$0.00	
Mileage (provide a basis for the estimate)						miles	\$0.700	\$0.00	
Lodging - statewide (x nights / x persons)						night	\$132.00	\$0.00	
Meals - 1st day & last day travel Statewide Lunch/Dinner (# persons)						day	\$51.00	\$0.00	
Meals - Statewide B/L/D (# days x # persons)						day	\$68.00	\$0.00	
							Subtotal Expenses	\$0.00	
							Subtotal Expenses (rounded)	\$0	
							TOTAL COSTS - ROADWAY DESIGN & PLANS	\$104,673	

Classification	2025 Max. Hourly Rate
Engineering Principal	\$ 122.00
Sr. Engineering Manager	\$ 103.00
Engineering Manager	\$ 84.00
Sr. Project Engineer	\$ 78.00
Project Engineer	\$ 55.00
Engineer Intern III	\$ 52.00
Engineer Intern II	\$ 49.00
Engineer Intern I	\$ 47.00
Sr. Engineering Designer	\$ 73.00
Engineering Designer III	\$ 52.00
Engineering Designer II	\$ 47.00
Engineering Designer I	\$ 35.00
Engineering CAD Technician III	\$ 34.00
Engineering CAD Technician II	\$ 33.00
Engineering CAD Technician I	\$ 26.00
Environmental Manager	\$ 75.00
Sr. Environmental Scientist	\$ 55.00
Environmental Scientist II	\$ 40.00
Environmental Scientist I	\$ 32.00
Environmental Field Technician	\$ 25.00
Sr. Planning Manager	\$ 90.00
Planning Manager	\$ 74.00
Sr. Planner	\$ 68.00
Project Planner	\$ 60.00
Planner II	\$ 45.00
Planner I	\$ 32.00
Sr. Landscape Architect	\$ 65.00
Landscape Architect Manager	\$ 66.00
Landscape Designer II	\$ 38.00
Landscape Designer I	\$ 35.00
Sr. GIS Manager	\$ 60.00
GIS Manager	\$ 47.00
GIS Analyst	\$ 37.00
GIS Technician II	\$ 29.00
GIS Technician I	\$ 23.00
Surveying Principal	\$ 116.00
Sr. Surveying Manager	\$ 87.00
Surveying Manager	\$ 68.00
Sr. Project Surveyor	\$ 60.00
Project Surveyor	\$ 55.00
Survey Coordinator	\$ 52.00

Classification	2025 Max. Hourly Rate
Surveyor Intern II	\$ 44.00
Surveyor Intern I	\$ 35.00
Crew Chief II	\$ 45.00
Crew Chief I	\$ 35.00
Field Surveyor III	\$ 32.00
Field Surveyor II	\$ 29.00
Field Surveyor I	\$ 25.00
Survey CAD Technician III	\$ 45.00
Survey CAD Technician II	\$ 32.00
Survey CAD Technician I	\$ 29.00
Administrative Principal	\$ 116.00
Administrative Manager	\$ 82.00
Administrative IV	\$ 58.00
Administrative III	\$ 52.00
Administrative II	\$ 36.00
Administrative I	\$ 21.00

Schedule

Job. No. 040993 – Fayetteville MLK Ped. Impvts. (Tap-24)(S)

Notice to Proceed: January 2026

Project Kickoff Meeting: February 1, 2026

30% Design Package: Delivered March 1, 2026 (4 weeks)

30% Plan review (2 weeks)

60% Design Package: Delivered May 1, 2026 (6 weeks)

60% Plan review (2 weeks)

Utility coordination April – June 2026

ROW Acquisition Documents: July 2026

90% Design Package: Delivered August 1, 2026

90% Plan review (2 weeks)

Final Plans/Authorization to Advertise: October 1, 2026



MEETING OF MARCH 31, 2026

TO: Mayor Rawn and City Council

THROUGH: Matt Mihalevich, Active Transportation Manager
Justin Bland, City Engineer
Chris Brown, Public Works Director
Keith Macedo, Chief of Staff

FROM: Dane Eifling, Mobility Coordinator

SUBJECT: **Traffic Calming Policy Update**

RECOMMENDATION:

Staff recommends updating the traffic calming policy based on Transportation Committee recommendations.

BACKGROUND:

In 2003, in response to multiple complaints about speeding in residential neighborhoods, a traffic calming policy was recommended as part of a citywide traffic study. Although the policy was never formally adopted, its framework was used for several years to prioritize requests through a points-based scoring system. The primary factors considered were traffic speed and traffic volume.

This system remained in use until approximately 2008, when funding constraints resulted in traffic calming being removed from the City's budget. In 2019, staff resumed evaluating traffic calming requests using the informal policy framework that had been in place since 2008. At that time, it became clear that the existing policy did not align with neighborhood expectations, as nearly all requests failed to meet the established thresholds. In response, staff drafted a revised traffic calming policy, which was adopted by City Council in March 2021 as resolution 95-21 and remains in effect today.

Shortly after the 2021 policy was adopted, City Council approved a new default speed limit of 20 mph for residential streets, and speed limits were adjusted on most streets throughout Fayetteville.

DISCUSSION:

Since 2021, city staff has responded to approximal 200 formal requests for traffic calming on various streets in Fayetteville. Under the existing policy the City has installed speed cushions traffic calming on the following streets:

1. Ash St
2. Assembly Dr
3. Stubblefield Rd
4. Sequoyah Dr
5. Roberts Rd
6. Alberta St

Mailing address:

113 W. Mountain Street
Fayetteville, AR 72701

www.fayetteville-ar.gov

7. Harold St
8. Morning Mist Dr
9. Elm St
10. Duncan Ave
11. New Bridge Rd
12. Bulldog Blvd
13. East Oaks Dr
14. S College Ave
15. Happy Hollow Rd

The current policy is a point-based system that requires 35 points or an 85th percentile speed of 35 MPH on residential link or urban center classified streets to qualify. Points are mostly based on traffic speed and volume with additional points added for lack of sidewalks and proximity to schools. A neighborhood consensus of 60% approval from residents is also required with residents voting to approve exact location and type of treatment.

The proposed updates to the policy keep the framework of the existing policy intact but make some key changes to the scoring system and eligibility requirements to better align the policy to the expectations of the public and the original intent to provide traffic calming focused on safety in mitigating higher speed “cut through” traffic on residential and minor urban streets.

Key changes include:

- Basing the speed score on the posted or statutory speed limit of the street rather than a default 25 mph
 - This increases overall points scored for most streets with 20 mph speed limits
- Adding 2.5 points for streets designated as on-street bicycle routes
- Subtracting 5 points for streets with fully separated sidewalks or side paths
- Allowing low-volume neighborhood link streets with less than 1,500 ADT to qualify
- Increasing the minimum qualifying score from 35 to 50 points
- Simplifying the process for requesting a traffic study by requiring five signatures rather than signatures from 70% of residents
- Lowering the maximum allowable ADT from 4,000 to 3,000
- Requiring a minimum of 15 resident signatures to approve any installation

These changes have been reviewed and approved by City Council's Transportation Committee and recommended for adoption.

BUDGET/STAFF IMPACT:

None

ATTACHMENTS: 3. Staff Review Form, 4. Traffic Calming Policy 2026 Draft Revision - Red Line, 5. Traffic Calming Policy 2026 Draft Revision - Clean

Mailing address:

113 W. Mountain Street
Fayetteville, AR 72701

www.fayetteville-ar.gov



City of Fayetteville, Arkansas

113 West Mountain Street
Fayetteville, AR 72701
(479) 575-8323

Legislation Text

File #: 2026-1131

A RESOLUTION TO APPROVE A NEW TRAFFIC CALMING POLICY

WHEREAS, on March 16, 2021, the City Council passed Resolution 95-21 approving a Traffic Calming Policy; and

WHEREAS, since the new policy was approved, the City Council approved a new default speed limit of 20 miles per hour for residential streets and speed limits were adjusted on most streets throughout Fayetteville; and

WHEREAS, staff recommends an update, which will keep the framework of the existing policy intact but make some key changes to the scoring system and eligibility requirements to better align the policy to the expectations of the public and the original intent to provide traffic calming focused on safety in mitigating higher speed “cut through” traffic on residential and minor urban streets.

NOW THEREFORE, BE IT RESOLVED BY THE CITY COUNCIL OF THE CITY OF FAYETTEVILLE, ARKANSAS:

Section 1: That the City Council of the City of Fayetteville, Arkansas hereby approves the new Traffic Calming Policy, a copy of which is attached to this Resolution and made a part hereof.

City of Fayetteville Staff Review Form

2026-516

Item ID

4/7/2026

City Council Meeting Date - Agenda Item Only
N/A for Non-Agenda Item

Matt Mihalevich

3/3/2026

ENGINEERING (621)

Submitted By

Submitted Date

Division / Department

Action Recommendation:

Staff recommends updating the traffic calming policy based on Transportation Committee recommendations.

Budget Impact:

N/A	N/A
Account Number	Fund
N/A	N/A
Project Number	Project Title
Budgeted Item? <u>No</u>	Total Amended Budget \$ -
	Expenses (Actual+Encum) \$ -
	Available Budget \$ -
Does item have a direct cost? <u>No</u>	Item Cost \$ -
Is a Budget Amendment attached? <u>No</u>	Budget Amendment \$ -
	Remaining Budget \$ -

Purchase Order Number: _____

Previous Ordinance or Resolution # 95-21

Change Order Number: _____

Approval Date: _____

Original Contract Number: _____

Comments:



TRAFFIC CALMING POLICY

Update **EFFECTIVE MARCH 17, 2024**Draft March 2026

INTRODUCTION

Excessive traffic speeds in neighborhood areas is an issue of concern to citizens in Fayetteville. This policy addresses a procedure through which neighborhoods can be considered for traffic calming measures. Traffic calming is the management of traffic through the use of roadway design features. Traffic management through traffic calming is most effective if the features are both warranted and properly designed.

Traffic calming solutions may be warranted where there is a demonstrated need for traffic calming, and where solutions can be identified that may address the need. Not only must the needs be perceived by the neighborhood, but they must also be documented to be substantive. In order for traffic calming strategies to be effective, traffic data collection and analysis must validate that calming needs are legitimate. These traffic studies may include:

1. Speed studies
2. Vehicle and pedestrian counts
3. Through-traffic surveys
4. Accident records

Effective solutions for valid needs also require that the selected traffic calming strategy be appropriate for the need. Once an effective strategy for traffic calming has been selected, it should be properly designed in accordance with the relevant design parameters. These should include consideration of:

1. Traffic volume
2. Design speed
3. Design vehicle characteristics
4. Emergency services

Although warranted and properly designed traffic calming strategies can have the desired benefits of managing traffic, they also can create disadvantages to adjacent streets and neighborhoods and to the traveling public at large. Traffic calming can have the potential of shifting an existing traffic problem to another street or neighborhood. Traffic calming may also increase delay for emergency response vehicles and can increase long term maintenance costs for the City. Because of the controversy and potential disadvantages, traffic calming should be implemented only with the majority consent of those directly impacted.

This policy therefore provides guidelines for the following traffic calming activities:

1. Requests for traffic calming consideration
2. Prioritization of requests
3. Identification and approval of traffic calming strategies
4. Programming of traffic calming improvements
5. Design of traffic calming projects
6. Evaluation of traffic calming projects

REQUESTS FOR TRAFFIC CALMING CONSIDERATION

Requests for traffic calming received will be catalogued, and will be assigned to one of three tiers:

Tier 1: Proximity to Schools (1/2-mile walkshed) or other significant points of interest

Tier 2: Obvious cut-through opportunities (based on engineering best judgement, could be supplemented with traffic count study)

Tier 3: Dead-end or disconnected areas of the transportation network

If a ~~resident~~^{citizen} requests police patrol enforcement, the request will be forwarded to the Police Department for possible enforcement action.

Requests from multiple streets may be grouped together and/or staff may add streets that may be impacted by traffic calming to requests. If such grouping occurs, the requirements of the next section will apply to the grouped streets.

PRIORITIZATION OF TRAFFIC CALMING REQUESTS

Locations assigned to Tier 1 or Tier 2 will be scheduled for further study upon receipt by the City Engineer of a petition or other affirmative response by at least ~~five signatures one member of seventy percent (70%) of the~~^{from} property owners ~~ers~~^{sh} or residents of ~~ips facing~~ the street(s) on which the traffic calming study is requested or written request from a Property Owners Association or other similar group.

A block shall consist of every developed property having frontage on the street to be studied between successive intersecting streets. A typical traffic calming petition shall include, at a minimum, a description of the street or streets which are to be included in the calming study and the signature or other written evidence of approval ~~70% of the~~. Where more than one person is listed as owner for each property, only one person shall be entitled to vote or sign a petition. Likewise, if multiple properties are owned by the same person or persons, the owner(s) will only be entitled to one vote or signature on the petition. ~~This definition of property owner shall apply throughout this policy document.~~

Active Property Owners Associations (POA's) may also provide approve or disapprove a traffic calming project. Written communication from association leadership may be used to meet the consensus requirements instead of a petition signed by residents.

The City staff assigned to administer traffic calming studies will review the request for validity and will assess whether other streets may be impacted by implementation of traffic calming strategies.

City staff will define the area of potential impact resulting from the traffic calming implementation on a case by case basis.

Relevant data to be collected for the study includes:

1. Speed and volume counts
2. Accident experience
3. Distance to schools and other pedestrian generators
4. Pedestrian facilities

This data will be used to assign a point value to each Tier 1 and Tier 2 location, as follows:

Speed	Per Calc.	5pts for each MPH over five MPH over 25 MPH the posted or statutory speed limit -using the 85 th percentile
Volume	Per Calc.	ADT/100
<u>Sidewalks and Bikeways</u>	-5 to 0 <u>-5 pts</u>	5 pts if no continuous <u>accessible</u> sidewalks, 2.5pts if one side, <u>2.5 points street is part of designated shared on-street bike route. Subtract 5 points for streets with continuous adequate/comfortable sidewalks or side paths.</u>
Crashes	<u>0 to -5 pts</u>	1 <u>point</u> for each <u>auto</u> accident/year at one location, <u>3 points for any fatal or serious injury crash or crash involving a pedestrians or bicyclists.</u>
<u>School zones and Pedestrian Activity Walkshed</u>	<u>0 to -10 pts</u>	10 pts within quarter-mile radius, 7.5pts if between quarter- and half-mile radius, 5pts within half-mile radius, 2.5pts if partially in half-mile radius <u>or within half mile of a major pedestrian activity generator such as large city park, employment cent, university or community center.</u>

Locations receiving a minimum of **50 points, or that have 85th percentile speeds ~~35 above 35~~ mph or higher** will receive further consideration for traffic calming under this program. Locations with 85th percentile speeds not exceeding 5 mph over the speed limit will not receive further consideration regardless of score.

Streets that do not meet these minimum criteria, and dead-end or disconnected streets that are placed in Tier 3 generally will not be considered for structural traffic calming, but may be considered for enforcement and are eligible for consideration of tactical urbanism permits.

IDENTIFICATION OF TRAFFIC CALMING STRATEGIES

City staff shall present to the residents living within the area of potential impact the results of the traffic calming study and rating. Where traffic calming may be appropriate, staff will present options for traffic calming in the affected area. **Sixty percent (60%) or more of the property owners in the area of potential impact must support the proposed strategy option(s) with a minimum of 15 affirmative votes** before the City will consider traffic calming implementation.

In certain circumstances, the 60% requirement may be waived. These circumstances may include locations that have disinterested owners (e.g. locations with a large percentage of rental properties or locations adjacent to a single multifamily apartment complex) or other situations that are deemed necessary for public safety by the City.

PROGRAMMING OF TRAFFIC CALMING IMPROVEMENTS

Periodically, but not less than once each year, City staff will prioritize those traffic calming strategies within the City that have been approved within their area of impact. Prioritization will be based on the rating system. The City Council Transportation Committee will approve projects to be implemented, up to the yearly budget as determined by City Council. Those traffic calming improvement locations not selected will remain in consideration for up to three years.

City ward boundaries should be considered so that projects affecting each ward can be implemented.

DESIGN OF TRAFFIC CALMING PROJECTS

The design of traffic calming devices must meet the following criteria:

1. ~~Only residential links, or~~ Only residential links, or urban center streets with less than 3,000 ADT and neighborhood link streets with less than 1,500 ADT are eligible.
- ~~2. The street shall have an ADT of less than 4,000.~~
- ~~23.~~ Limited to streets having only one lane of through traffic in each direction.
- ~~34.~~ Streets must not be primary emergency routes, as ~~determined~~ determined by the Police and Fire Departments.
- ~~45.~~ At the discretion of the City Engineer, certain traffic calming measures may not be used if they would create an unsafe condition for motorists driving at normal speeds under average driving conditions.
- ~~56.~~ Streets must not be through truck routes unless an acceptable alternative route is identified and approved. Design of traffic calming features shall accommodate a single unit truck.

EVALUATION OF TRAFFIC CALMING PROJECTS

Six months following the completion of the traffic calming improvements, City staff may undertake a follow-up study to determine if the traffic calming features have achieved the initial purpose of the project. If unacceptable impacts are identified, corrective measures may be taken. Traffic calming measures may be removed after the evaluation period for any of the following reasons:

1. Emergency response is significantly impacted.
2. The problem for which the traffic calming was implemented has been transferred to another street.
3. At least sixty percent (60%) of the property owners in the defined area of impact sign a petition to remove the traffic calming measures. This option will result in complete

removal of all measures. Where traffic calming measures are removed by petition, a period of at least 3 years must pass before future petitions for traffic calming measures will be considered on the same street(s).

4. If traffic volumes have increased beyond established limits for traffic calming, or sidewalk or trail infrastructure has been added, traffic calming measures may be reduced or removed.



TRAFFIC CALMING POLICY

Update Draft March 2026

INTRODUCTION

Excessive traffic speeds in neighborhood areas is an issue of concern to citizens in Fayetteville. This policy addresses a procedure through which neighborhoods can be considered for traffic calming measures. Traffic calming is the management of traffic through the use of roadway design features. Traffic management through traffic calming is most effective if the features are both warranted and properly designed.

Traffic calming solutions may be warranted where there is a demonstrated need for traffic calming, and where solutions can be identified that may address the need. Not only must the needs be perceived by the neighborhood, but they must also be documented to be substantive. In order for traffic calming strategies to be effective, traffic data collection and analysis must validate that calming needs are legitimate. These traffic studies may include:

1. Speed studies
2. Vehicle and pedestrian counts
3. Through-traffic surveys
4. Accident records

Effective solutions for valid needs also require that the selected traffic calming strategy be appropriate for the need. Once an effective strategy for traffic calming has been selected, it should be properly designed in accordance with the relevant design parameters. These should include consideration of:

1. Traffic volume
2. Design speed
3. Design vehicle characteristics
4. Emergency services

Although warranted and properly designed traffic calming strategies can have the desired benefits of managing traffic, they also can create disadvantages to adjacent streets and neighborhoods and to the traveling public at large. Traffic calming can have the potential of shifting an existing traffic problem to another street or neighborhood. Traffic calming may also increase delay for emergency response vehicles and can increase long term maintenance costs for the City. Because of the controversy and potential disadvantages, traffic calming should be implemented only with the majority consent of those directly impacted.

This policy therefore provides guidelines for the following traffic calming activities:

1. Requests for traffic calming consideration
2. Prioritization of requests
3. Identification and approval of traffic calming strategies
4. Programming of traffic calming improvements
5. Design of traffic calming projects
6. Evaluation of traffic calming projects

REQUESTS FOR TRAFFIC CALMING CONSIDERATION

Requests for traffic calming received will be catalogued, and will be assigned to one of three tiers:

Tier 1: Proximity to Schools (1/2-mile walkshed) or other significant points of interest

Tier 2: Obvious cut-through opportunities (based on engineering best judgement, could be supplemented with traffic count study)

Tier 3: Dead-end or disconnected areas of the transportation network

If a resident requests police patrol enforcement, the request will be forwarded to the Police Department for possible enforcement action.

Requests from multiple streets may be grouped together and/or staff may add streets that may be impacted by traffic calming to requests. If such grouping occurs, the requirements of the next section will apply to the grouped streets.

PRIORITIZATION OF TRAFFIC CALMING REQUESTS

Locations assigned to Tier 1 or Tier 2 will be scheduled for further study upon receipt by the City Engineer of a petition or other affirmative response by at least five signatures from property owners or residents of the street(s) on which the traffic calming study is requested or written request from a Property Owners Association or other similar group.

A block shall consist of every developed property having frontage on the street to be studied between successive intersecting streets. A typical traffic calming petition shall include, at a minimum, a description of the street or streets which are to be included in the calming study and the signature or other written evidence of approval. Where more than one person is listed as owner for each property, only one person shall be entitled to vote or sign a petition. Likewise, if multiple properties are owned by the same person or persons, the owner(s) will only be entitled to one vote or signature on the petition.

Active Property Owners Associations (POA's) may also provide approve or disapprove a traffic calming project. Written communication from association leadership may be used to meet the consensus requirements instead of a petition signed by residents.

The City staff assigned to administer traffic calming studies will review the request for validity and will assess whether other streets may be impacted by implementation of traffic calming strategies.

City staff will define the area of potential impact resulting from the traffic calming implementation on a case by case basis.

Relevant data to be collected for the study includes:

1. Speed and volume counts
2. Accident experience
3. Distance to schools and other pedestrian generators
4. Pedestrian facilities

This data will be used to assign a point value to each Tier 1 and Tier 2 location, as follows:

Speed	Per Calc.	5pts for each MPH over five MPH over the posted or statutory speed limit - using the 85 th percentile
Volume	Per Calc.	ADT/100
Sidewalks and Bikeways	-5 to 5 pts	5 pts if no continuous accessible sidewalks, 2.5pts if one side, 2.5 points street is part of designated shared on-street bike route. Subtract 5 points for streets with continuous adequate/comfortable sidewalks or side paths.
Crashes	0 to 5 pts	1 point for each auto accident/year at one location, 3 points for any fatal or serious injury crash or crash involving a pedestrians or bicyclists.
School zones and Pedestrian Activity	0 to 10 pts	10 pts within quarter-mile radius, 7.5pts if between quarter- and half-mile radius, 5pts within half-mile radius, 2.5pts if partially in half-mile radius or within half mile of a major pedestrian activity generator such as large city park, employment cent, university or community center.

Locations receiving a minimum of **50 points, or that have 85th percentile speeds 35 mph or higher** will receive further consideration for traffic calming under this program. Locations with 85th percentile speeds not exceeding 5 mph over the speed limit will not receive further consideration regardless of score.

Streets that do not meet these minimum criteria, and dead-end or disconnected streets that are placed in Tier 3 generally will not be considered for structural traffic calming, but may be considered for enforcement and are eligible for consideration of tactical urbanism permits.

IDENTIFICATION OF TRAFFIC CALMING STRATEGIES

City staff shall present to the residents living within the area of potential impact the results of the traffic calming study and rating. Where traffic calming may be appropriate, staff will present options for traffic calming in the affected area. **Sixty percent (60%) or more of the property owners in the area of potential impact must support the proposed strategy option(s) with a minimum of 15 affirmative votes** before the City will consider traffic calming implementation.

In certain circumstances, the 60% requirement may be waived. These circumstances may include locations that have disinterested owners (e.g. locations with a large percentage of rental

properties or locations adjacent to a single multifamily apartment complex) or other situations that are deemed necessary for public safety by the City.

PROGRAMMING OF TRAFFIC CALMING IMPROVEMENTS

Periodically, but not less than once each year, City staff will prioritize those traffic calming strategies within the City that have been approved within their area of impact. Prioritization will be based on the rating system. The City Council Transportation Committee will approve projects to be implemented, up to the yearly budget as determined by City Council. Those traffic calming improvement locations not selected will remain in consideration for up to three years.

City ward boundaries should be considered so that projects affecting each ward can be implemented.

DESIGN OF TRAFFIC CALMING PROJECTS

The design of traffic calming devices must meet the following criteria:

1. Only residential links, urban center streets with less than 3,000 ADT and neighborhood link streets with less than 1,500 ADT are eligible.
2. Limited to streets having only one lane of through traffic in each direction.
3. Streets must not be primary emergency routes, as determined by the Police and Fire Departments.
4. At the discretion of the City Engineer, certain traffic calming measures may not be used if they would create an unsafe condition for motorists driving at normal speeds under average driving conditions.
5. Streets must not be through truck routes unless an acceptable alternative route is identified and approved. Design of traffic calming features shall accommodate a single unit truck.

EVALUATION OF TRAFFIC CALMING PROJECTS

Six months following the completion of the traffic calming improvements, City staff may undertake a follow-up study to determine if the traffic calming features have achieved the initial purpose of the project. If unacceptable impacts are identified, corrective measures may be taken. Traffic calming measures may be removed after the evaluation period for any of the following reasons:

1. Emergency response is significantly impacted.
2. The problem for which the traffic calming was implemented has been transferred to another street.
3. At least sixty percent (60%) of the property owners in the defined area of impact sign a petition to remove the traffic calming measures. This option will result in complete removal of all measures. Where traffic calming measures are removed by petition, a period of at least 3 years must pass before future petitions for traffic calming measures will be considered on the same street(s).

4. If traffic volumes have increased beyond established limits for traffic calming, or sidewalk or trail infrastructure has been added, traffic calming measures may be reduced or removed.